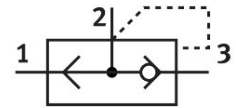



Válvula de escape rápido SE-1/4-B

Número de artículo: 9686

FESTO



 [General operating condition](#)

Datasheet product reliability

The information in this "Product reliability data sheet" is based on products being used as intended. This includes complying with all specifications in data sheets, catalogues, user documentation and the general operating conditions. The user alone is responsible for determining whether a product is suitable for a particular application.

Característica	Valor
Common Cause Failure (CCF) measures ¹⁾	Observe compressed air quality Comply with ambient temperature and temperature of medium
Service-life value B ₁₀ ²⁾	10 Mio cycles
Well-tried component ³⁾	Yes

- 1) CCF measures have to be verified for the precise application. Therefore, the list with measures is not meant to be exhaustive.
- 2) The ascertainment of characteristic service life values is generally based on the ISO 19973 "Pneumatic fluid power - Assessment of component reliability by testing".
- 3) The product is a well-tried product for a safety-related application according to ISO 13849-1. The relevant basic and well-tried safety principles according ISO 13849-2 for this product are fulfilled. The suitability of the product for a precise application must be verified and confirmed by the user.