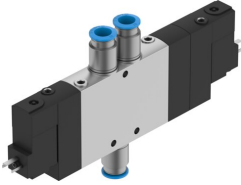


Solenoid valve CPE18-M1H-5/3G-QS-10

Part number: 170259

FESTO



[General operating condition](#)

Data sheet

Feature	Value
Valve function	5/3-way, closed
Type of actuation	Electrical
Construction width	18 mm
Standard nominal flow rate (standardised to DIN 1343)	1050 l/min
pneumatic working port	QS-10
Operating voltage	24 V DC
Operating pressure	0.25 MPa ... 1 MPa
Operating pressure	2.5 bar ... 10 bar
Design	Piston gate valve
Type of reset	Mechanical spring
Approval	c UL us - Recognised (Oil)
Maritime classification	See certificate
Certificate issuing authority	DNV-TAA000032X UL MH19482
Degree of protection	IP65 With plug socket To IEC 60529
Nominal size	8 mm
Exhaust-air function	Can be throttled
Sealing principle	Soft
Mounting position	Any
Manual override	Detenting via accessory Non-detenting
Type of piloting	Piloted
Pilot air supply	Internal
Flow direction	Non-reversible
Symbol	00991033
Valve position code	Label holder
lap	Overlap
Switching time off	38 ms
Switching time on	20 ms
Duty cycle	100%
Max. positive test pulse with 0 signal	3300 µs
Max. negative test pulse with 1 signal	3100 µs
Characteristic coil data	24 V DC: 1.5 W
Permissible voltage fluctuations	-15% / +10%
Operating medium	Compressed air to ISO 8573-1:2010 [7:4:4]

Feature	Value
Note on operating and pilot medium	Lubricated operation possible (in which case lubricated operation will always be required)
Vibration resistance	Transport application test with severity level 2 to FN 942017-4 and EN 60068-2-6
Shock resistance	Shock test with severity level 2 to FN 942017-5 and EN 60068-2-27
Corrosion resistance class CRC	2 - Moderate corrosion stress
LABS (PWIS) conformity	VDMA24364-B1/B2-L
Media temperature	-5 °C ... 50 °C
Ambient temperature	-5 °C ... 50 °C
Electrical connection	Type C
Type of mounting	With through-hole
Pilot exhaust port 82	M5
Pilot exhaust port 84	M5
Pilot air port 12	M5
Pilot air port 14	M5
Pneumatic connection, port 1	QS-10
Pneumatic connection, port 2	QS-10
Pneumatic connection, port 3	G1/4
Pneumatic connection, port 4	QS-10
Pneumatic connection, port 5	G1/4
Note on materials	RoHS compliant
Material seals	NBR
Material housing	Die-cast aluminium