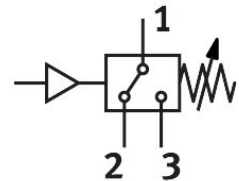
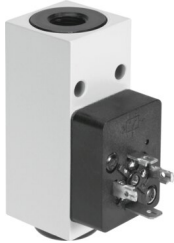


Pressure switch PEV-1/4-B-OD

Part number: 175250

FESTO



[PDF General operating condition](#)

Data sheet

Feature	Value
Conforms to standard	EN 60947-5-1
Symbol	00991471
Approval	CCC
CE mark (see declaration of conformity)	To EU Low Voltage Directive
UKCA marking (see declaration of conformity)	To UK regulations for electrical equipment
Explosion protection	The information in the certificate must be observed! Zone 1 (ATEX) Zone 2 (ATEX) Zone 21 (ATEX) Zone 22 (ATEX)
Note on materials	RoHS-compliant
Measured variable	Relative pressure
Measurement method	Pneumatic/electric pressure transducer
Operating pressure	0.1 MPa ... 1.2 MPa
Operating pressure	1 bar ... 12 bar
Operating medium	Compressed air to ISO 8573-1:2010 [7::-] Water
Note on operating and pilot medium	Lubricated operation possible (in which case lubricated operation will always be required)
Media temperature	-20 °C ... 80 °C
Ambient temperature	-20 °C ... 80 °C
Switching element function	Changeover switch
Max. switching frequency	3 Hz
Max. switching output voltage AC	250 V
Max. switching output voltage DC	125 V
Max. output current	5000 mA
Min. load current	1 mA at 24 V 10 mA at 10 V 100 mA at 5 V
Utilisation category - inductive load	AC-14 DC-13
Utilisation category - resistive load	AC-12 DC-12
Electrical connection	Type A Plugs To DIN 43650 Square design

Feature	Value
Type of mounting	With through-hole
Mounting position	optional
Pneumatic connection	G1/4
Product weight	194 g
Material housing	Die-cast aluminium
Material switch contact	Silver
Switching status indication	Yellow LED
Setting range threshold value	1 bar ... 12 bar
Degree of protection	IP65
Corrosion resistance class CRC	2 - Moderate corrosion stress
LABS (PWIS) conformity	VDMA24364-B1/B2-L