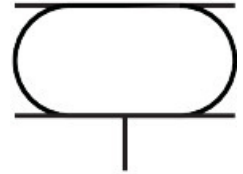


# Bellows cylinder EB-385-230

Part number: 193791

FESTO



 General operating condition

## Data sheet

Feature	Value
Size	385
Required installation diameter	400 mm
Stroke	230 mm
Max. extended height	310 mm
Max. angle of inclination	20 deg
Max. offset	20 mm
Min. installation height	77 mm
Mode of operation	Single-acting
Symbol	00991205
Operating pressure	0 bar ... 8 bar
Operating medium	Compressed air to ISO 8573-1:2010 [-:::4]
Note on operating and pilot medium	Lubricated operation not possible
Corrosion resistance class CRC	2 - Moderate corrosion stress
LABS (PWIS) conformity	VDMA24364-B1/B2-L
Ambient temperature	-40 °C ... 70 °C
Reset force	400 N
Product weight	6900 g
Type of mounting	Via female thread
Pneumatic connection	G1/4
Note on materials	RoHS-compliant
Material bellows	NR/BR
Material housing	Steel Galvanised