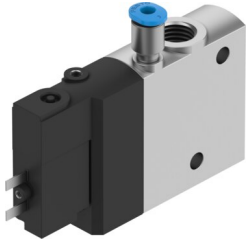


Solenoid valve CPE14-M1BH-3GLS-1/8

Part number: 196930

FESTO



[General operating condition](#)

Data sheet

Feature	Value
Valve function	3/2-way, closed, monostable
Type of actuation	Electric
Construction width	14 mm
Standard nominal flow rate (standardised to DIN 1343)	900 l/min
pneumatic working port	G1/8
Operating voltage	24V DC
Operating pressure	-0.09 MPa ... 1 MPa
Operating pressure	-0.9 bar ... 10 bar
Design	Piston gate valve
Type of reset	Pneumatic spring
Approval	c UL us - Recognized (OL)
Maritime classification	See certificate
Certificate issuing authority	DNV-TAA000032X UL MH19482
Degree of protection	IP65 With plug socket To IEC 60529
Nominal size	6 mm
Sealing principle	Soft
Mounting position	optional
Manual override	Detenting via accessory Non-detenting
Type of piloting	Pilot actuated
Pilot air supply	External
Flow direction	Non-reversible
Symbol	00991405
Valve position code	Inscription label holder
lap	Overlap
Pilot pressure	0.25 MPa ... 0.8 MPa
Pilot pressure	2.5 bar ... 8 bar
Switching time off	27 ms
Switching time on	16 ms
Duty cycle	100% in conjunction with holding current reduction
Max. positive test pulse with 0 signal	1200 µs
Max. negative test pulse with 1 signal	900 µs
Characteristic coil data	24 V DC: 1.28 W

Feature	Value
Permissible voltage fluctuations	-15%/+10%
Operating medium	Compressed air to ISO 8573-1:2010 [7:4:4]
Note on operating and pilot medium	Lubricated operation possible (in which case lubricated operation will always be required)
Vibration resistance	Transport application test with severity level 2 to FN 942017-4 and EN 60068-2-6
Shock resistance	Shock test with severity level 2 to FN 942017-5 and EN 60068-2-27
Corrosion resistance class CRC	2 - Moderate corrosion stress
LABS (PWIS) conformity	VDMA24364-B1/B2-L
Media temperature	-5 °C ... 50 °C
Pilot medium	Compressed air to ISO 8573-1:2010 [7:4:4]
Ambient temperature	-5 °C ... 50 °C
Product weight	60 g
Electrical connection	2-pin
Type of mounting	With through-hole
Pilot exhaust port 82	M3
Pilot air port 12	M3
Pneumatic connection, port 1	G1/8
Pneumatic connection, port 2	G1/8
Pneumatic connection, port 3	G1/8
Note on materials	RoHS-compliant
Material seals	NBR
Material housing	Die-cast aluminium