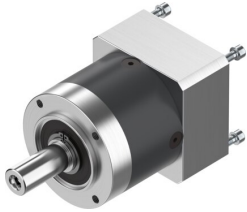


Gear unit EMGA-60-P-G5-EAS-60

Part number: 2297687

FESTO



 General operating condition

Data sheet

Feature	Value
Gear unit flange size	60 mm
Motor flange size	60 mm
Torsional backlash	0.17 deg
Type of gear unit	Planetary gear
Gear unit ratio	5:1
Max. drive speed	13000 rpm
Operating temperature of gear unit	-25 °C ... 90 °C
LABS (PWIS) conformity	VDMA24364-B2-L
Degree of protection	IP54
Continuous output torque	40 Nm
Mass moment of inertia of gear unit	0.078 kgcm ²
Max. output torque	64 Nm
Max. efficiency	98 %
Torsional rigidity	2.3 Nm/arcmin
Product weight	900 g
Permissible axial shaft load	500 N
Permissible radial shaft load	400 N
Gear unit interface, output shaft	60H
Gear unit interface, drive shaft	60P
Note on materials	RoHS-compliant