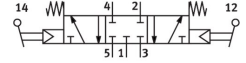
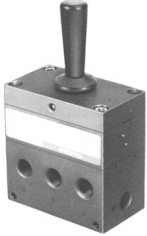



Toggle lever valve H-5/3-1/4

Part number: 4577

FESTO



 General operating condition

Data sheet

Feature	Value
Valve function	5/3 closed
Type of actuation	Manual
Standard nominal flow rate (standardised to DIN 1343)	680 l/min
pneumatic working port	G1/4
Operating pressure	0.2 MPa ... 1 MPa
Operating pressure	2 bar ... 10 bar
Type of reset	Mechanical spring
Nominal size	7 mm
Sealing principle	Soft
Type of piloting	Pilot actuated
Flow direction	Non-reversible
Symbol	00991698
LABS (PWIS) conformity	VDMA24364-B1/B2-L
Ambient temperature	-10 °C ... 60 °C
Product weight	1060 g
Pneumatic connection, port 1	G1/4
Pneumatic connection, port 2	G1/4
Pneumatic connection, port 3	G1/4