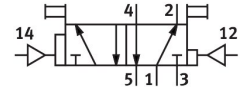
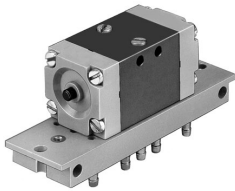


Pneumatic valve JD-5-PK-3

Part number: 4901

FESTO



[PDF](#) General operating condition

Data sheet

| Feature | Value |
|---|---|
| Valve function | 5/2-way, bistable, dominant |
| Standard nominal flow rate (standardised to DIN 1343) | 105 l/min |
| pneumatic working port | PK-3 |
| Operating pressure | 1 bar ... 8 bar |
| Design | Poppet seat |
| Nominal size | 2.5 mm |
| Symbol | 00991011 |
| Switching time reversal | 9 ms |
| Switching time reversal (dominating) | 25 ms |
| Operating medium | Compressed air to ISO 8573-1:2010 [7:-:-] |
| LABS (PWIS) conformity | VDMA24364-B1/B2-L |
| Ambient temperature | 0 °C ... 60 °C |
| Product weight | 130 g |
| Type of mounting | On sub-base On mounting frame With through-hole |
| Auxiliary pilot air port 12 | PK-3 |
| Auxiliary pilot air port 14 | PK-3 |
| Pneumatic connection, port 1 | PK-3 |
| Pneumatic connection, port 2 | PK-3 |
| Pneumatic connection, port 3 | PK-3 |
| Pneumatic connection, port 4 | PK-3 |
| Pneumatic connection, port 5 | PK-3 |
| Note on materials | RoHS-compliant |
| Material sub-base | Brass PPS reinforced |
| Material seals | NBR |
| Material housing | Die-cast zinc |