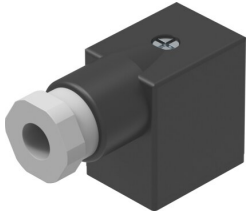


Plug socket MSSD-F-M16

Part number: 539710

FESTO



 General operating condition

Data sheet

| Feature | Value |
|--|---|
| Frequency of connection | 50 |
| Cable outlet | Angled |
| Note on cable outlet | 180° rotatable |
| Product weight | 35 g |
| Electrical connection 1, design | Angular |
| Electrical connection 1, connection type | Socket |
| Electrical connection 1, connector system | Plug pattern type B to industry standard, 11 mm |
| Electrical connection 1, number of connections/cores | 3 |
| Electrical connection 1, type of mounting | On solenoid valve via M3 central screw |
| Electrical connection 2, connector system | Screw terminal |
| Operational voltage range DC | 0 V ... 250 V |
| Operational voltage range AC | 0 V ... 250 V |
| Current rating at 40° C | 6 A |
| Immunity to surge | 2 kV |
| Protective conductor connection | Available |
| Cable fitting | M16x1.5 |
| Cable diameter | 6 mm ... 8 mm |
| Nominal cross section conductor | ≤0.75 mm ² |
| Degree of protection | IP65 |
| Note on degree of protection | In assembled state |
| Ambient temperature | -20 °C ... 115 °C |
| LABS (PWIS) conformity | VDMA24364-B2-L |
| Note on materials | RoHS-compliant |
| Pollution degree | 3 |
| Corrosion resistance class CRC | 1 - Low corrosion stress |
| Material housing | PA-reinforced |
| Housing colour | Black |
| Material seals | HNBR |