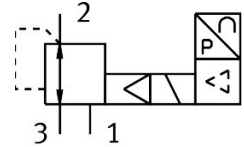


Proportional-pressure regulator VPPM-6L-L-1-G18-0L10H-V1N

FESTO

Part number: 542235



General operating condition

Data sheet

| Feature | Value |
|---|--|
| Nominal size, supply | 6 mm |
| Nominal size, exhaust | 4,5 mm |
| Type of actuation | Electric |
| Sealing principle | Soft |
| Mounting position | optional |
| Design | Piloted diaphragm regulator |
| Short circuit current rating | For all electrical connections |
| Safety instructions | Safety position VPPM: if the power supply cable is interrupted, output pressure is maintained unregulated. |
| Symbol | 00995303 |
| Reverse polarity protection | For all electrical connections |
| Type of reset | Mechanical spring |
| Type of piloting | Pilot actuated |
| Valve function | 3-way proportional pressure regulator |
| Display type | LED |
| Pressure regulation range | 0.01 MPa ... 1 MPa |
| Pressure regulation range | 0.1 bar ... 10 bar |
| Inlet pressure 1 | 0 bar ... 11 bar |
| Inlet pressure 1 | 0 MPa ... 1.1 MPa |
| Max. pressure hysteresis | 0.05 bar |
| Standard nominal flow rate (standardised to DIN 1343) | 1400 l/min |
| Operational voltage range DC | 21.6 V ... 26.4 V |
| Max. current consumption | 300 mA |
| Duty cycle | 100% |
| Max. electrical power consumption | 7 W |
| Residual ripple | 10 % |
| Switching output | NPN |
| Signal range analogue output | 0 - 10 V |
| Accuracy analogue output in \pm %FS | 2 %FS |
| Signal range analogue input | 0 - 10 V |
| Operating medium | Compressed air to ISO 8573-1:2010 [7:4:4] Inert gas |
| Note on operating and pilot medium | Lubricated operation not possible |
| Approval | RCM trademark c UL us listed (OL) |
| KC mark | KC-EMV |

| Feature | Value |
|--|---|
| CE mark (see declaration of conformity) | To EU EMC Directive In accordance with EU RoHS Directive |
| UKCA marking (see declaration of conformity) | To UK RoHS instructions |
| Certificate issuing authority | UL E322346 |
| Corrosion resistance class CRC | 2 - Moderate corrosion stress |
| LABS (PWIS) conformity | VDMA24364-B1/B2-L |
| Media temperature | 10 °C ... 50 °C |
| Degree of protection | IP65 |
| Ambient temperature | 0 °C ... 60 °C |
| Product weight | 400 g |
| Linearity | 1 %FS |
| Hysteresis | 0.5 %FS |
| Reproducibility | 0.5 %FS |
| Total accuracy | 2.25%FS |
| Temperature coefficient | 0.04 %/K |
| Repetition accuracy FS | 0.5 % |
| Electrical connection | M12 Plugs |
| Type of mounting | With through-hole With accessories |
| Pneumatic connection, port 1 | G1/8 |
| Pneumatic connection, port 2 | G1/8 |
| Pneumatic connection, port 3 | G1/8 |
| Note on materials | RoHS-compliant |
| Material housing | Wrought aluminium alloy Anodised |