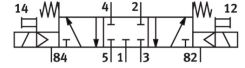


Solenoid valve

VUVS-L25-P53C-MD-G14-F8

FESTO

Part number: 575523



 [General operating condition](#)

Data sheet

| Feature | Value |
|---|--|
| Valve function | 5/3 closed |
| Type of actuation | Electric |
| Valve size | 26.5 mm |
| Standard nominal flow rate (standardised to DIN 1343) | 1200 l/min |
| pneumatic working port | G1/4 |
| Operating pressure | 0.25 MPa ... 1 MPa |
| Operating pressure | 2.5 bar ... 10 bar |
| Design | Piston gate valve |
| Type of reset | Mechanical spring |
| Approval | c UL us - Recognized (OL) |
| Maritime classification | See certificate |
| Certificate issuing authority | DNVGL-TAA000011J |
| Nominal size | 6.5 mm |
| Exhaust-air function | With flow control option |
| Sealing principle | Soft |
| Mounting position | optional |
| Manual override | Detenting Non-detenting |
| Type of piloting | Pilot actuated |
| Pilot air supply | Internal |
| Flow direction | Non-reversible |
| Symbol | 00991033 |
| lap | Overlap |
| b value | 0.4 |
| C value | 5.2 l/sbar |
| Switching time off | 42 ms |
| Switching time on | 13 ms |
| Switching time reversal | 26 ms |
| Max. positive test pulse with 0 signal | 2000 µs |
| Max. negative test pulse with 1 signal | 3600 µs |
| Operating medium | Compressed air to ISO 8573-1:2010 [7:4:4] |
| Note on operating and pilot medium | Lubricated operation possible (in which case lubricated operation will always be required) |
| Vibration resistance | Transport application test with severity level 2 to FN 942017-4 and EN 60068-2-6 |
| Shock resistance | Shock test with severity level 2 to FN 942017-5 and EN 60068-2-27 |

| Feature | Value |
|--------------------------------|--|
| Corrosion resistance class CRC | 2 - Moderate corrosion stress |
| LABS (PWIS) conformity | VDMA24364-B1/B2-L |
| Cleanroom class | Class 6 according to ISO 14644-1 |
| Media temperature | -10 °C ... 60 °C |
| Pilot medium | Compressed air to ISO 8573-1:2010 [7:4:4] |
| Ambient temperature | -10 °C ... 60 °C |
| Product weight | 430 g |
| Type of mounting | Either: On manifold rail With through-hole |
| Breather connection | Not ducted |
| Pilot exhaust port 82 | M5 |
| Pilot exhaust port 84 | M5 |
| Pneumatic connection, port 1 | G1/4 |
| Pneumatic connection, port 2 | G1/4 |
| Pneumatic connection, port 3 | G1/4 |
| Pneumatic connection, port 4 | G1/4 |
| Pneumatic connection, port 5 | G1/4 |
| Note on materials | RoHS-compliant |
| Material seals | HNBR NBR |
| Material housing | Die-cast aluminium Painted |
| Material piston slide | Wrought aluminium alloy |
| Material screws | Galvanised steel |