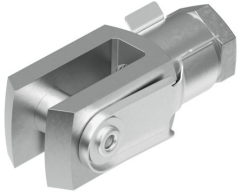


Rod clevis SG-M10X1,25

Part number: 6144

FESTO



 [General operating condition](#)

Data sheet

| Feature | Value |
|--|--|
| Size | M10x1.25 |
| Conforms to standard | DIN 71752 ISO 8140 |
| Threaded connection | Female thread M10x1.25 |
| Corrosion resistance class CRC | 1 - Low corrosion stress |
| LABS (PWIS) conformity | VDMA24364-B2-L |
| Suitability for the production of Li-ion batteries | Metals with more than 1% by mass of copper are excluded from use. Exceptions are printed circuit boards, cables, electrical plug connectors and coils |
| Ambient temperature | -40 °C ... 150 °C |
| Max. load capacity | 0.9 kN |
| Product weight | 103 g |
| Note on materials | RoHS-compliant |
| Material bolt | Steel Galvanised |
| Material clevis | Steel Galvanised |
| Material nut | Steel Galvanised |