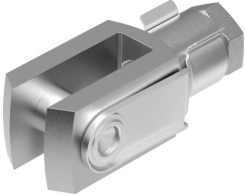


Rod clevis SG-M16X1,5

Part number: 6146

FESTO



 [General operating condition](#)

Data sheet

Feature	Value
Size	M16x1.5
Conforms to standard	DIN 71752 ISO 8140
Threaded connection	Female thread M16x1.5
Corrosion resistance class CRC	1 - Low corrosion stress
LABS (PWIS) conformity	VDMA24364-B2-L
Suitability for the production of Li-ion batteries	Metals with more than 1% by mass of copper are excluded from use. Exceptions are printed circuit boards, cables, electrical plug connectors and coils
Ambient temperature	-40 °C ... 150 °C
Max. load capacity	4 kN
Product weight	375 g
Note on materials	RoHS-compliant
Material bolt	Steel Galvanised
Material clevis	Steel Galvanised
Material nut	Steel Galvanised