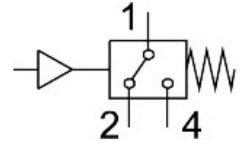
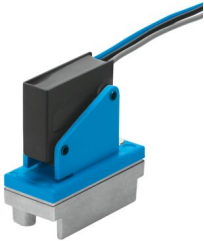


PE converter PE-1/8-1N-SW

Part number: 6484

FESTO



[General operating condition](#)

Data sheet

Feature	Value
Conforms to standard	EN 60947-5-1
Symbol	00995409
CE mark (see declaration of conformity)	To EU Low Voltage Directive
UKCA marking (see declaration of conformity)	To UK regulations for electrical equipment
Measured variable	Relative pressure
Measurement method	Pneumatic/electric pressure transducer
Operating pressure	0 MPa ... 0.8 MPa
Operating pressure	0 bar ... 8 bar
Max. overload pressure	12 bar
Operating medium	Compressed air to ISO 8573-1:2010 [7:4:4]
Note on operating and pilot medium	Lubricated operation possible
Media temperature	0 °C ... 60 °C
Ambient temperature	0 °C ... 60 °C
Switching output	Contacting
Switching function	Threshold value with fixed hysteresis
Switching element function	Changeover switch
Switch-on point max.	2 bar
Switch-off point min.	0.5 bar
Max. switching frequency	1 Hz
Min. load current	100 mA
Operational voltage range AC	12 V ... 250 V
Operational voltage range DC	12 V ... 250 V
Utilisation category - inductive load	AC-14 DC-13
Utilisation category - resistive load	AC-12 DC-12
Electrical connection	3 connector leads
Electrical connection 1, connector system	Open end
Cable length	0.5 m
Material cable sheath	PVC
Type of mounting	Either: On 1n mounting frame With through-hole
Mounting position	optional
Pneumatic connection	G1/8
Product weight	50 g

Feature	Value
Material housing	Die-cast aluminium PA-reinforced Steel VMQ (silicone)
Material switch contact	Silver
Material electrical connection	Tin-plated
Material membrane	TPE-U(PU)
Setting options	Permanently set
Degree of protection	IP67
Insulation voltage	2000 V
LABS (PWIS) conformity	VDMA24364-B1/B2-L
Pollution degree	3