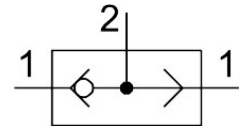


OR gate OS-1/4-B

Part number: 6682

FESTO



 [General operating condition](#)

Data sheet

Feature	Value
Valve function	OR function
Pneumatic connection, port 1	G1/4
Pneumatic connection, port 2	G1/4
Type of mounting	With through-hole
Standard nominal flow rate (standardised to DIN 1343)	1170 l/min
Operating pressure	1 bar ... 10 bar
Ambient temperature	-10 °C ... 60 °C
Material housing	Wrought aluminium alloy
Operating medium	Compressed air to ISO 8573-1:2010 [7:-:-]
Nominal size	6.5 mm
Mounting position	Any
Symbol	00991102
Note on operating and pilot medium	Lubricated operation possible (in which case lubricated operation will always be required)
LABS (PWIS) conformity	VDMA24364-B1/B2-L
Media temperature	-10 °C ... 60 °C
Product weight	110 g
Pneumatic connection, port 3	G1/4
Note on materials	RoHS compliant
Material seals	NBR