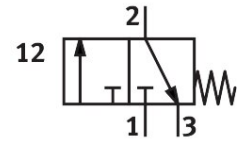


Front panel valve SV-3-M5

Part number: 6817

FESTO



[PDF](#) General operating condition

Data sheet

Feature	Value
Valve function	3/2-way, closed, monostable
Type of actuation	Manual
Standard nominal flow rate (standardised to DIN 1343)	65 l/min
Operating pressure	-0.095 MPa ... 0.8 MPa
Operating pressure	-0.95 bar ... 8 bar
Design	Poppet valve with spring return
Type of reset	Mechanical spring
Nominal size	2 mm
Sealing principle	Soft
Mounting position	optional
Type of piloting	Direct
Flow direction	Non-reversible
Symbol	00991292
lap	Overlap
Explosion protection	Zone 1 (ATEX) Zone 2 (ATEX) Zone 21 (ATEX) Zone 22 (ATEX)
Operating medium	Compressed air to ISO 8573-1:2010 [7:4:4]
LABS (PWIS) conformity	VDMA24364-B1/B2-L
Ambient temperature	-10 °C ... 60 °C
Actuating force	12 N
Product weight	40 g
Type of mounting	With through-hole
Pneumatic connection, port 1	M5
Material seals	NBR
Material housing	Polymer Brass