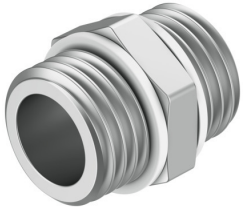


Double nipple NPFC-DS-G38-G38-M

Part number: 8142588

FESTO



 [General operating condition](#)

Data sheet

Feature	Value
Material threaded fitting	Nickel-plated brass
Size of pack	10
Operating pressure	-0.95 bar ... 10 bar
Operating medium	Compressed air to ISO 8573-1:2010 [-::-]
Corrosion resistance class CRC	1 - Low corrosion stress
LABS (PWIS) conformity	VDMA24364-B2-L
Ambient temperature	-10 °C ... 60 °C
Nominal tightening torque, pneumatic connection 1	38.5 Nm
Nominal tightening torque, pneumatic connection 2	38.5 Nm
Tolerance for nominal tightening torque	± 20%
Product weight	24.84 g
Pneumatic connection, port 1	G3/8
Pneumatic connection, port 2	G3/8
Note on materials	RoHS-compliant
Material seals	PVC