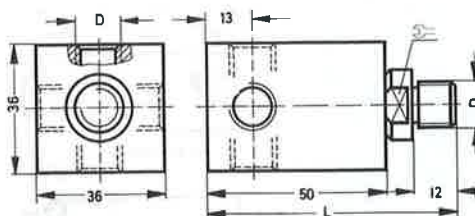


Rotary distributor Type GF-...

with 1 rigid air supply line and 4 rotating outlets.

3 outlets are sealed with plugs.



Pressure range		1 to 10 bar				
Max. speed		300 rpm				
Order code		Connection	Weight	Material	Dimensions	
Part No.	Type	D	kg		L	SW
2094	GF-1/4	G 1/4	0.270	Aluminium, steel	70	17
2095	GF-3/8	G 3/8	0.290		73	19

Manifold connector Type BX-...

for mounting distributor blocks, manifolds and valve manifolds.



Order code		Distributor block	Manifold	Valve manifold	Weight	Material
Part No.	Type				kg	
4524	BX-M 5	FR-12-M 5		BMF-...	0.001	Steel, perbunan
2018	BX-1/8		BM-1/8, BJ-1/8	BMC-...	0.002	
4571	BXA-1/8	FR-8-1/8			0.007	
2019	BX-1/4	FR-8-1/4	BM-1/4, BJ-1/4		0.011	
6412	BX-1/2, -3/4	FR-8-1/2			0.015	