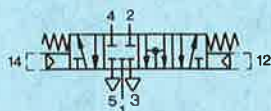


## Basic valve double piloted, spring centred Type LC-5/4-<sup>1</sup>/<sub>4</sub>



Centre position: 1, 4, 2, 3, 5 closed.  
With simultaneous signals at a and b:  
1, 4, 2, 3, 5 linked.

The basic valve can be combined with any of the following screw-in actuators, to meet different types of control requirements.

Low pressure pilot signal actuation within the pressure range of 0.5 mbar to 2.5 bar with amplifier actuators Type VE and LSK.

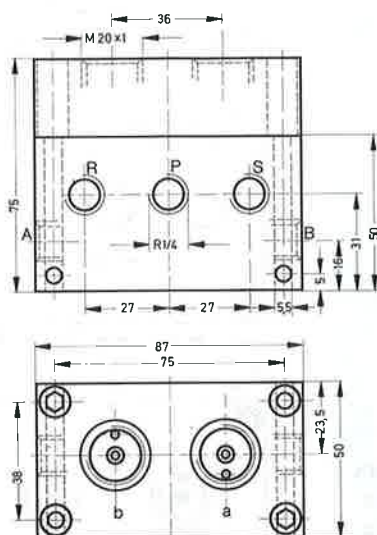
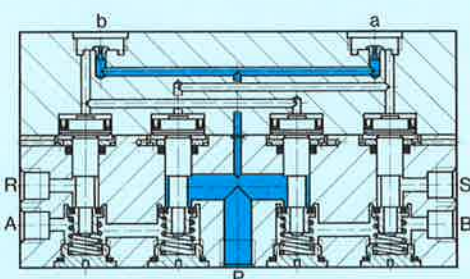
Direct pneumatic actuation with pilot adapter,  
Order code 4874 LCR-M 20 × 1-<sup>1</sup>/<sub>8</sub> (pilot port G<sup>1</sup>/<sub>8</sub>).

Pressure-controlled pneumatic actuation within the pressure range of 0.7 to 10 bar with adjustable pressure actuator Type UV.

Vacuum dependent pneumatic control with vacuum range -0,2 bar to -0,95 bar.

Solenoid actuation with solenoid actuators Type MKF and MKC.

2 different valve actuators (sheets 2.880 to 2.886) can be combined on one valve. The valve actuators should be ordered separately.



- 1 (P) = Supply port
- 2, 4 (A, B) = Working or outlet lines
- 3, 5 (R, S) = Exhaust



In its centre position, this valve holds the piston of a double-acting cylinder clamped under pressure.

For this reason, the valve is especially suitable for positioning, for emergency shut down and for holding double-acting cylinders in any desired position.

In order to prevent cylinder creep, speed control must be carried out only at the exhaust ports.

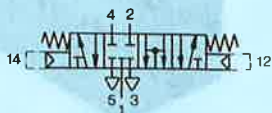
The separate exhaust outlets R and S make it possible to control the advance and return speeds of the cylinder by means of directly-screwed-in port flow controls.

Port flow control with silencer, Order code 4579 GRU-<sup>1</sup>/<sub>4</sub>, see sheet 2.622.

12

Order code	Part No./Type	4690 LC-5/4- <sup>1</sup> / <sub>4</sub>
Medium	Compressed air, filtered (lubricated or unlubricated)	
Design	Poppet valve, indirectly actuated in both directions, with spring centring	
Mounting	Through holes in housing	
Connection	G <sup>1</sup> / <sub>4</sub>	
Nominal size	7 mm	
Standard nominal flow rate (1 → 4)	680 l/min (basic valve)	
Pressure range	2 to 10 bar	
Temperature range	- 10 to +60 °C	
Materials	Housing: blue anodized aluminium; seals: perbunan	
Weight	0.800 kg	

### Basic valve double piloted spring centred Type LC-5/4- $\frac{1}{2}$



Centre position: 1, 4, 2, 3, 5 closed.  
With simultaneous signals at a and b:  
1, 4, 2, 3, 5 linked.

The basic valve can be combined with any of the following screw-in actuators, to meet the different types of control requirements.

Low pressure pilot signal actuation within the pressure range of 0.5 mbar to 2.5 bar with amplifier actuators Type VE and LSK.

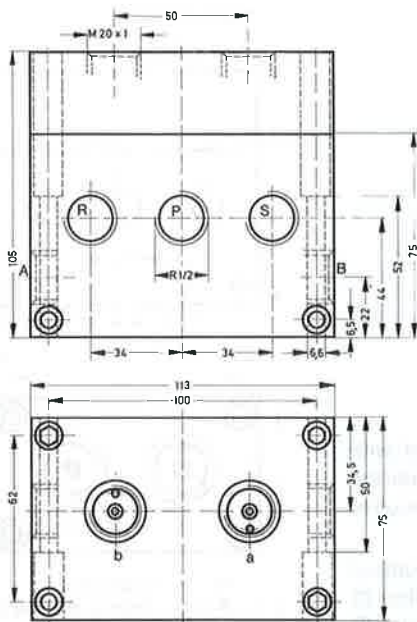
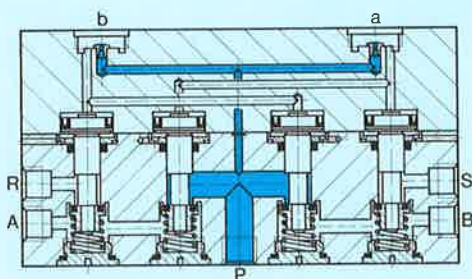
Direct pneumatic actuation with pilot adapter,  
Order code 4874 LCR-M 20 x 1- $\frac{1}{8}$  (pilot port  $G^{1/8}$ ).

Pressure-controlled pneumatic actuation within the pressure range of 0.7 to 10 bar with adjustable pressure actuator Type UV.

Vacuum dependent pneumatic with vacuum range -0.2 bar to -0.95 bar.

Solenoid actuation with solenoid actuators Type MKF and MKC.

2 different valve actuators (sheets 2.880 to 2.886) can be combined on one valve. The valve actuators should be ordered separately.



- 1 (P) = Supply port
- 2, 4 (A, B) = Working or outlet lines
- 3, 5 (R, S) = Exhaust

In its centre position, this valve holds the piston of a double-acting cylinder clamped under pressure.

For this reason, the valve is especially suitable for positioning, for emergency shut down and for holding double-acting cylinders in any desired position.

In order to prevent cylinder creep, speed control must be carried out only. The separate exhaust outlets R and S make it possible to control the advance and return speeds of the cylinder by means of directly-screwed-in port flow controls.

Port flow control with silencer, Order code 4869 GRU- $\frac{1}{2}$ , see sheet 2.622.

Order code	Part No./Type	4863 LC-5/4- $\frac{1}{2}$
Medium	Compressed air, filtered (lubricated or unlubricated)	
Design	Poppet valve, indirectly actuated in both directions, with spring centring	
Mounting	Through holes in housing	
Connection	$G^{1/2}$	
Nominal size	12 mm	
Standard nominal flow rate (1 → 4)	2700 l/min (basic valve)	
Pressure range	2 to 10 bar	
Temperature range	-10 to +60 °C	
Materials	Housing: blue anodized aluminium; seals: perbunan	
Weight	2.230 kg	