

Manifold sub-base type CABW-1/8

for manifold mounting

Delivery includes connection pieces and O-rings required for assembly

Accessories:

Blanking plate for vacant positions
type CDB-1/4

Orifice flow control for infinitely variable throttling of the exhaust

Type GROJ-1/8

End plate kit type CEPB-1/8

for manifold mounting

Delivery includes:

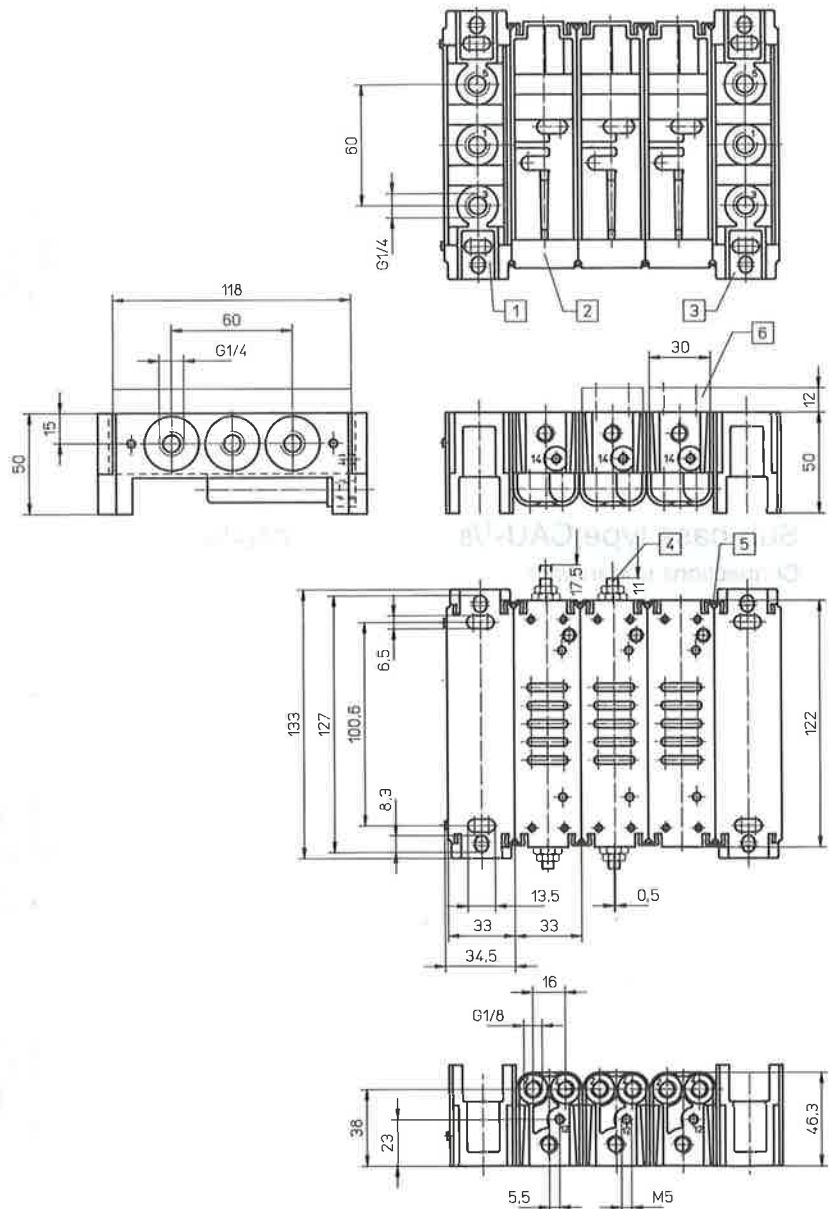
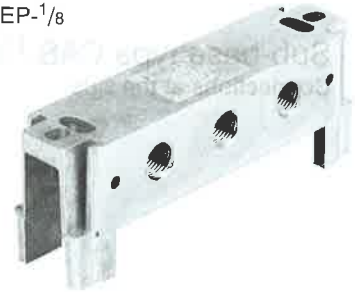
2 end plates type CEP-1/8, 3 isolating discs CSC-1/4,
3 O-rings, 1 locking screw for P-connection and
mounting screws.

Individual plate 11557 CEP-1/8

CABW-1/8



CEP-1/8



- 1 End plate type CEP-1/8
- 2 Manifold sub base type CABW-1/8
- 3 End plate type CEP-1/8
- 4 Orifice flow control type GROJ-1/8
- 5 Connector
- 6 Blanking plate type CDB-1/4

- 1 (P) = Supply port
- 4, 2 (A, B) = Working or outlet lines
- 5, 3 (R, S) = Exhaust
- 14, 12 (Y, Z) = Pilot lines

Isolating disk type CSC-1/4

To seal the common lines P, R, S between the end plate and the manifold or between 2 manifolds.

Order code	Part no./type	11558 CABW-1/8	13558 CEPB-1/8	5670 CSC-1/4	7660 CDB-1/4	13559 GROJ-1/8
Mounting		Manifold		—	—	—
Connection	Working lines	G 1/8	G 1/4	—	—	—
	Pilot lines	M 5	—	—	—	—
Standard nominal flow rate with valve		750 l/min	—	—	—	—
Materials		Die-cast aluminium	Plastic	Al	—	—
Weights		0.160 kg	0.510 kg	0.001 kg	0.125 kg	0.020 kg