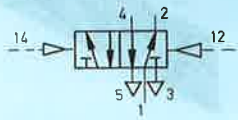


Cassette valve

Double pilot valve
without sub-base

Type CJ-5/2- $^{1/2}$



The valve is actuated by means of alternating pilot signals to ports 14 and 12. The switching position is retained after the signal is removed, until a counter-signal is received.

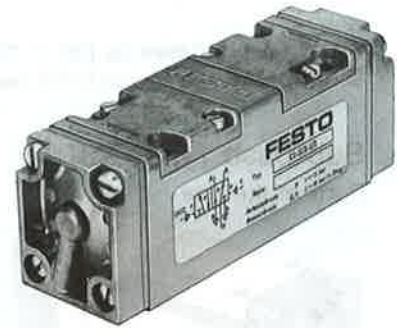
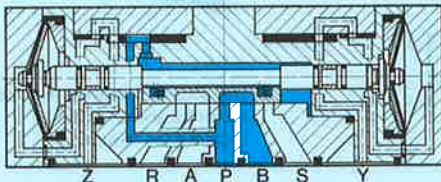
Mounting possibilities:

This cassette valve can be mounted directly on FESTO sub-bases (see next page) or, by means of sub-base adapters, onto standard sub-bases as per CE-TOP or DIN (VDMA).

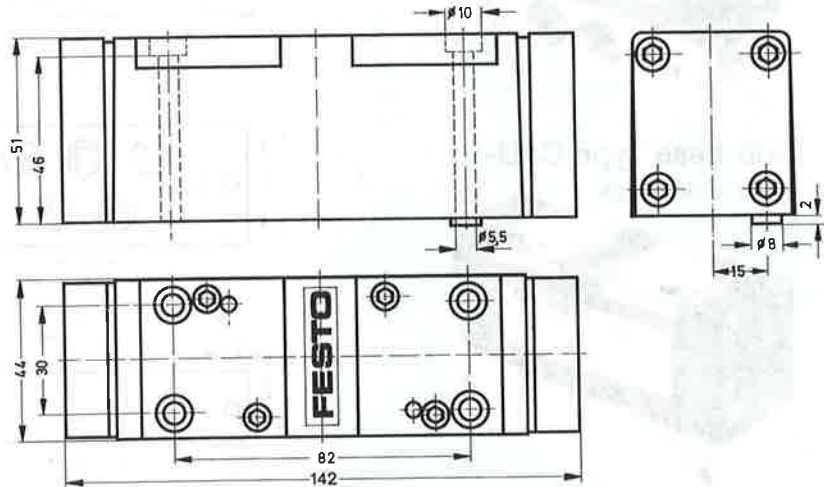
The mounting screws (4 bolts, M 5 x 55 DIN 84) are supplied with the valve. Standard sub-bases, see sheets 2.960 and 2.962.

Note:

Basic cassette valve, set of wearing parts and additional valve variants, see sheet 2.892.

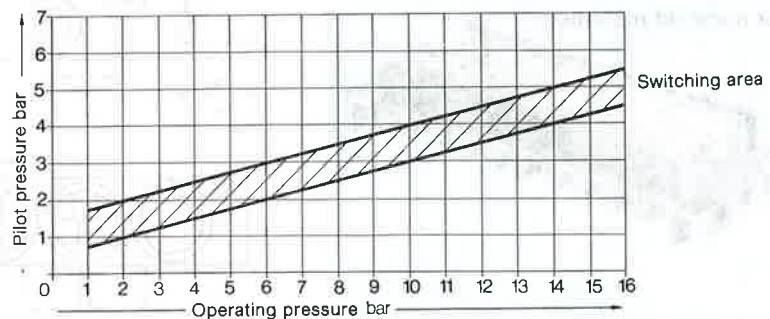


- 1 (P) = Supply port
- 4, 2 (A, B) = Working or outlet lines
- 5, 3 (R, S) = Exhaust
- 12, 14 (Y, Z) = Pilot lines



9

Minimum pilot pressure as a function of operating pressure

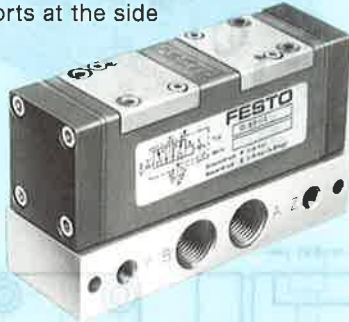


Order code	Part No./Type	5815 CJ-5/2- $^{1/2}$
Medium		Compressed air, filtered (lubricated or unlubricated)
Design		Flat slide valve with diaphragm control
Mounting		On sub-bases (see next page)
Connection	Working lines	$G^{1/2}$ (sub base)
	Pilot lines	$G^{1/8}$ (sub base)
Nominal size		12 mm
Standard nominal flow rate (P → A)		3000 l/min (basic valve)
Operating pressure range		1 to 12 bar
Pilot pressure range		2 to 10 bar (see graph)
Response time at 6 bar		35 ms
Ambient temperature		-5 to +40 °C
Medium temperature		-10 to +60 °C
Materials		Housing: aluminium casting; diaphragms: polyurethane; seals: perbunan
Weight		0.640 kg

Standard sub-bases as per CETOP and DIN (VDMA), see sheets 2.960 and 2.962.

Sub-base Type CAS-1/2

Ports at the side



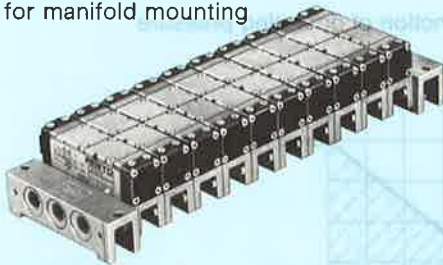
Sub-base Type CAU-1/2

Ports underneath



Sub-base Type CAB-1/2

for manifold mounting



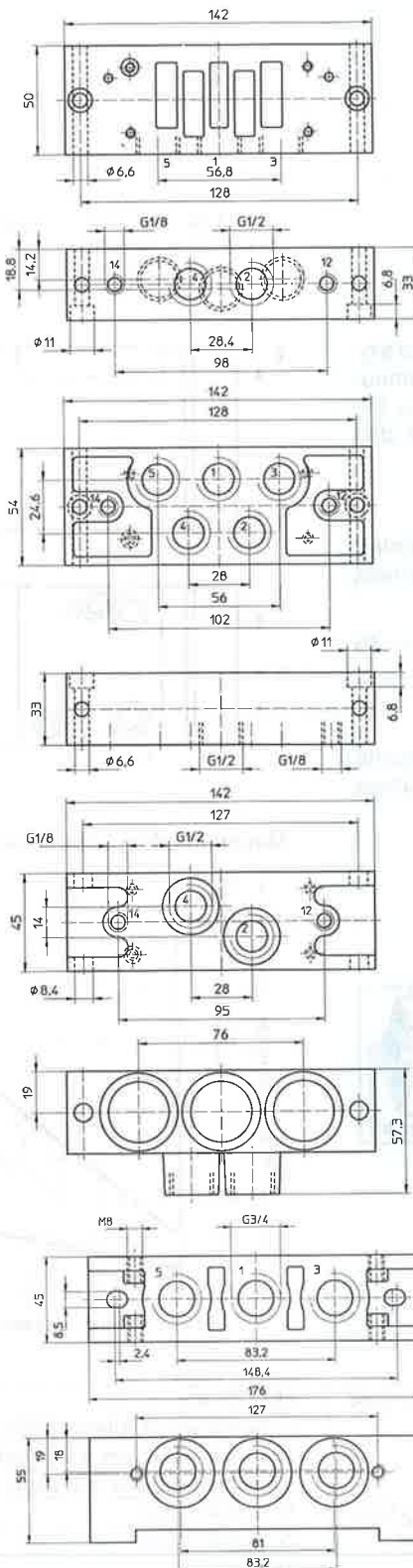
End plate kit Type CEPB-1/2-B

2 end plates for manifold mounting. Mounting bolts are supplied with the end plate.

Isolating disc Type NSC-1/2

To seal the common lines P, R, and S, between the end plate and sub-base or between 2 sub-bases.

In comparison with standard sub-bases, FESTO sub-bases require considerably less space for fitting which enables more valves per manifold.



CAS-1/2



- 1 (P) = Supply port
4, 2 (A, B) = Working or outlet lines
5, 3 (R, S) = Exhaust
12, 14 (Y, Z) = Pilot lines
CAU-1/2



CAB-1/2

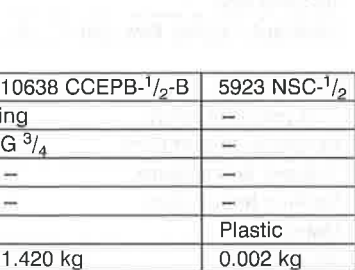


The scope of delivery includes the bolts and O-rings required for mounting.

CEPB-1/2-B



Accessories:
Plug G 3/8
Order Code 3570 B-3/8



Order code	Part No./Type	5801 CAS-1/2	5802 CAU-1/2	5800 CAB-1/2	10638 CCEPB-1/2-B	5923 NSC-1/2
Mounting		Through-holes	Through-holes	Manifold mounting	Manifold mounting	Manifold mounting
Connection	Working lines	G 1/2	G 1/2	G 1/2	G 3/4	—
	Pilot lines	G 1/8	G 1/8	G 1/8	—	—
Standard nominal flow rate with valve		2700 l/min	2700 l/min	—	—	—
Materials		Die-cast aluminium	Die-cast aluminium	Die-cast aluminium	Die-cast aluminium	Plastic
Weight		0.520 kg	0.500 kg	0.470 kg	1.420 kg	0.002 kg