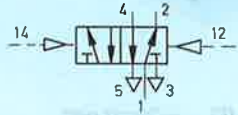


Cassette valve

Double pilot valve
without sub-base

Type CJ-5/2- $1/4$



The valve is actuated by means of alternating pilot signals to ports 14 and 12. The switching position is retained after the signal is removed, until a counter-signal is received.

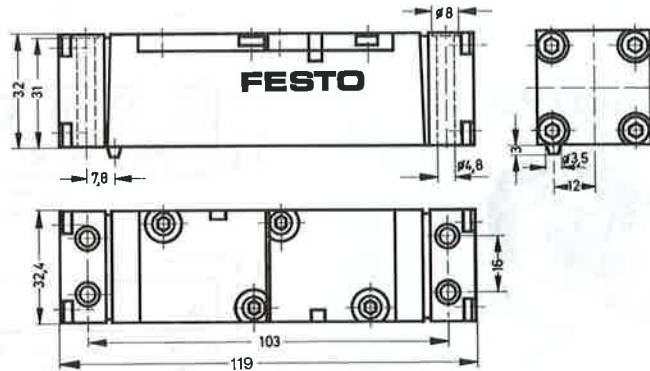
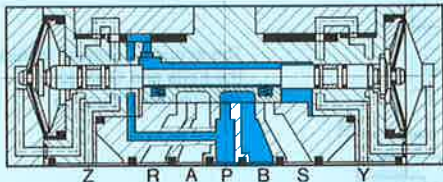
Mounting possibilities:

This cassette valve can be mounted directly on all FESTO sub-bases (see next page).

The mounting screws (4 bolts, M5 × 55 DIN 84) are supplied with the valve.

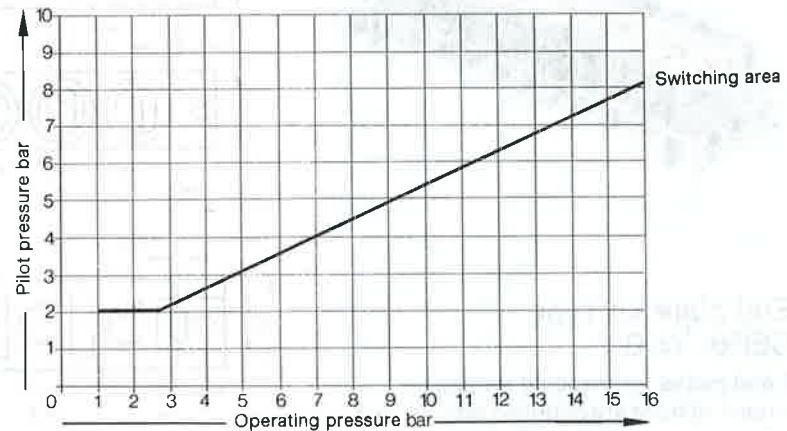
Note:

Basic cassette valve, set of wearing parts and additional valve variants, see sheet 2.950.



- 1 (P) = Supply port
- 4, 2 (A, B) = Working or outlet lines
- 5, 3 (R, S) = Exhaust
- 12, 14 (Y, Z) = Pilot lines

Minimum pilot pressure as a function of operating pressure



Order code	Part No./Type	5736 CJ-5/2- $1/4$
Medium		Compressed air, filtered (lubricated or unlubricated)
Design		Flat slide valve with diaphragm control
Mounting		On sub-bases (see next page)
Connection	Working lines	$G^{1/4}$ (sub-base)
	Pilot lines	$G^{1/8}$ (sub-base)
Nominal size		6.5 mm
Standard nominal flow rate (1 → 4)		1140 l/min (basic valve)
Operating pressure range		1 to 16 bar
Pilot pressure range		2 to 10 bar (see graph)
Response time at 6 bar		19 ms
Ambient temperature		−5 to +40° C
Medium temperature		−10 to +60° C
Materials		Housing: aluminium casting; diaphragms: polyurethane; seals: perbunan
Weight		0.270 kg

Isolating disc Type CSC-1/4

To seal the common lines P, R, and S, between the end plate and sub-base or between 2 sub-bases.

[illegible]

CAS-1/4

CAU-1/4

CAB-1/4



CEP-1/4-B

Subject to change