

Pneumatic limit valve Type RWN/O-3-1/8-B

with installation dimensions and switching point as per DIN 43 694



Depending on the selection of ports, this valve may have either of the following functions: No flow when normally closed (P₁ closed, A exhausted to R₁) or normally open when not actuated (P₂ → A, R₂ closed).

Valve actuators:

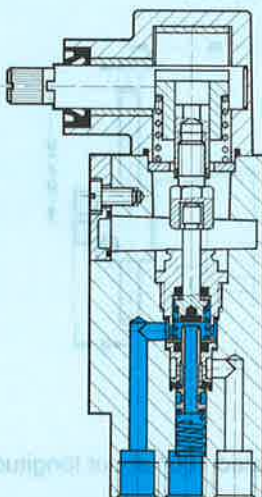
Swivel lever (short)
Type ASK-03



Swivel lever (long)
Type ASL-03



Swivel rod
Type ASS-03



11 (3) 2 33 (1)

1, 11 (P) = Supply line
2 (A) = Working or outlet line
3, 33 (R) = Exhaust

Type ASS-03 ASL-03 ASK-03 RWN/O-3-1/8-B



7

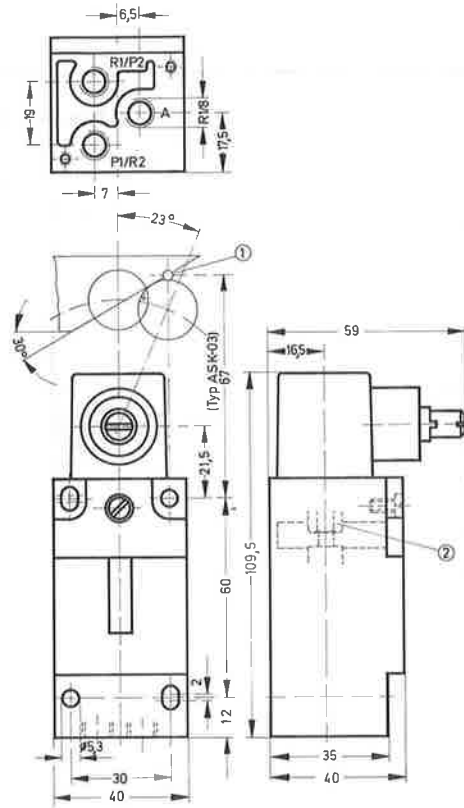
Order code	Basic valve	9694 RWN/O-3-1/8-B			
Part No./Type	Valve actuators	—	5838 ASK-03	5839 ASL-03	5840 ASS-03
Medium	Compressed air (filtered, lubricated or unlubricated) can be used for vacuum*				
Design	Poppet valve, directly actuated in one direction, with return spring				
Mounting	4 through holes in housing				
Connection	G ¹ / ₈				
Nominal size	3.5 mm				
Standard nominal flow rate (P → A)	120 l/min				
Pressure range	– 0.95 to 8 bar				
Actuating force at 6 bar operating pressure	min.	—	—	4 N (0.4 kp)	2 N (0.2 kp)
	max.	—	7.5 N (0.75 kp)	13 N (1.3 kp)	13 N (1.3 kp)
Temperature range	– 10 to + 60 °C				
Materials	Housing	anodized aluminium	Aluminium, steel	Aluminium, steel	Aluminium, steel
	Seals	Perbunan			
Weight		0.450 kg	0.030kg	0.065 kg	0.035 kg

* Vacuum connected to P₁ or P₂

Subject to change

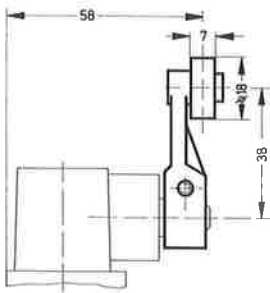
Type RWN/O-3-1/8-B

- ① Switching point as per DIN 43 694
- ② Adjusting screw for switching point (8 mm)
- ③ Barbed fitting for 3 and 4 mm tubing

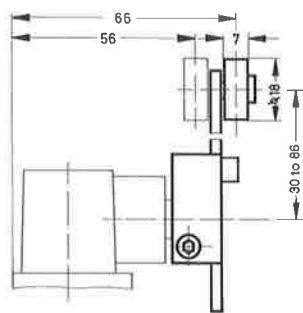


- 1 (P) = Supply port (or vacuum)
- 2 (A) = Working or outlet line
- 3 (R) = Exhaust

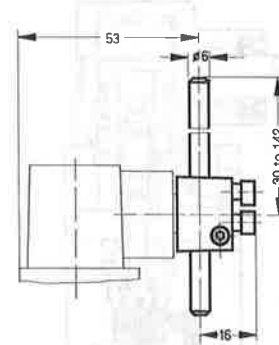
Type ASK-03



Type ASL-03



Type ASS-03



Adjusting the actuating range by rotating the stem

Basic position (condition as supplied) Stem rotated 90° about longitudinal axis Stem rotated 180° about longitudinal axis

