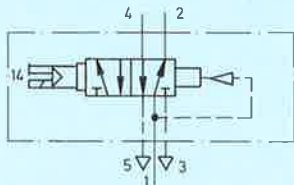


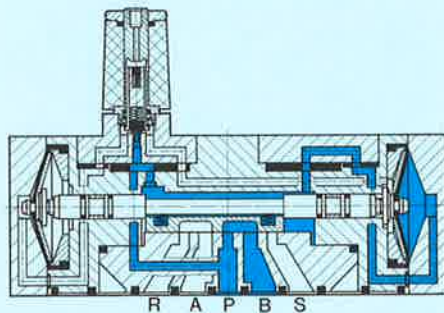
Festo cassette valve for mounting on Festo and other international standard sub-bases

Single solenoid valve,
spring return
with manual override without sub-base
Type CM-5/2-1/4-CH



When the voltage supply is switched on, the solenoid is energized and the valve is actuated. Resetting is pneumatic, by virtue of the difference in effective area of the two control diaphragms (air spring).

Note:
Basic cassette valve, set of wearing parts and additional valve variants, see sheet 2.890.



Mounting capabilities:
These cassette valves can be directly mounted onto Festo sub-bases (sheet 2.940); alternatively, adapters can be used to mount the valves onto standard sub-bases as per CETOP and DIN (VDMA) (sheet 2.950).

4 mounting screws (M4 × 40 DIN 84) are supplied with each valve.

Accessories:
For sockets and accessories, see sheets 2.594 to 2.598.
Solenoid actuator, 50 and 60 Hz (CH), 2.885.

- 1 (P) = Supply port
2, 4 (A, B) = Working or outlet lines
3, 5 (R, S) = Exhausts

Order code	with socket	5960 CM-5/2-1/4-CH	
Part No./Type	without socket	+ voltage data	
		Example: 5960 CM-5/2-1/4-CH + voltage data – OD	
Medium		Compressed air, filtered (lubricated or unlubricated)	
Design		Flat slide valve with diaphragm control	
Mounting		On sub-base (see sheet 2.940)	
Connection		G 1/4 (sub-base)	
Nominal size		6.5 mm	
Standard nominal flow rate (1 → 4)		1140 l/min (basic valve)	
Pressure range		1.5 to 10 bar	
Response time at 6 bar		On: 25 ms; Off: 29 ms	
Ambient temperature		– 5 to + 40 °C	
Medium temperature		– 10 to + 60 °C	
Materials		Housing: die-cast aluminium; Diaphragms: polyurethane; seals: Perbunan	
Weight		0.530 kg	
DC	Standard voltages	12, 24 V	} Solenoid coils, see sheets 2.592, 2.592.1
	Special voltages	12 to 240 V	
AC	Standard voltages	24, 42, 110, 220 V/50 Hz	
	Special voltages	12 to 380 V/50 or 60 Hz	
Power consumption	DC	12 W	
	AC	Hold: 22 VA, pull: 30 VA	
Duty cycle		100%	
Degree of protection		IP 65 (DIN 40050)	

[illegible]

- 1 (P) = Supply port
2, 4 (A, B) = Working and outlet lines
3, 5 (R, S) = Exhausts