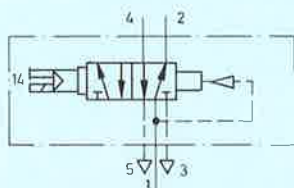


Festo cassette valve for mounting on Festo and other international standard sub-bases

Single solenoid valve,
spring return

with manual override without sub-base

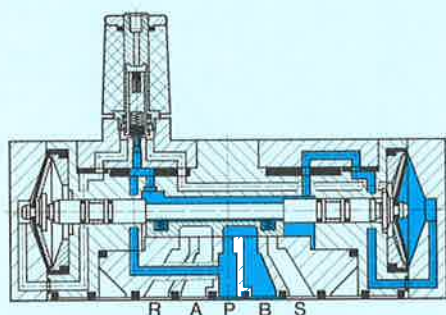
Type CM-5/2-1/2-CH
CM-5/2-1/2-FH



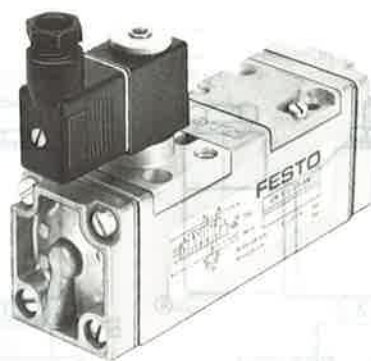
When the voltage supply is switched on, the solenoid is energized and the valve is actuated. Resetting is pneumatic, by virtue of the difference in effective area of the two control diaphragms (air spring).

Note:

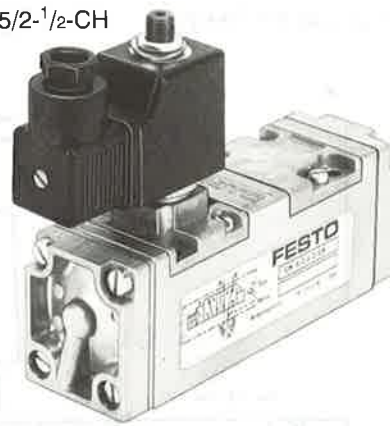
Basic cassette valve, set of wearing parts and additional valve variants, see sheet 2.892.



CM-5/2-1/2-FH



CM-5/2-1/2-CH



Mounting capabilities:

These cassette valves can be directly mounted onto Festo sub-bases (sheet 2.940); alternatively, adapters can be used to mount the valves onto standard sub-bases as per CETOP and DIN (VDMA) (sheet 2.960).

4 mounting screws (M5 × 55 DIN 84) are supplied with each valve.

Accessories:

For sockets and accessories, see sheets 2.594 to 2.598.

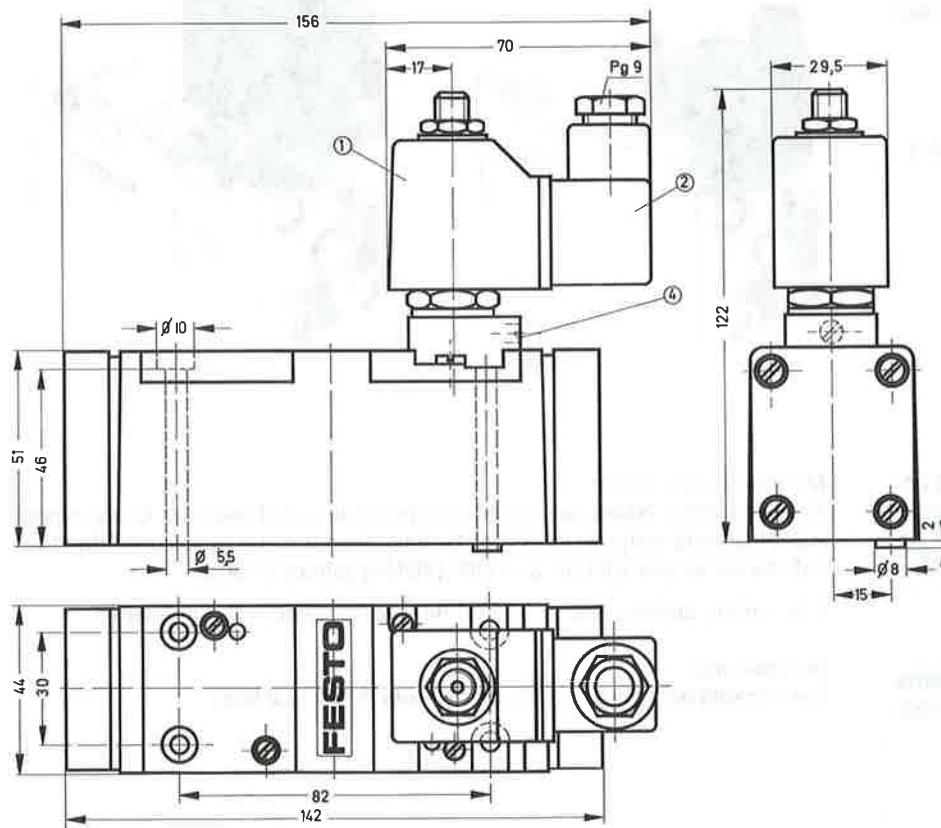
10

1 (P) = Supply port
2, 4 (A, B) = Working lines
3, 5 (R, S) = Exhausts

Order code Part No./Type	with socket	6117 CM-5/2-1/2-CH + voltage data	6223 CM-5/2-1/2-FH + voltage data
	without socket	Example: 6117 CM-5/2-1/2-CH + voltage data – OD	
Medium		Compressed air, filtered (lubricated or unlubricated)	
Design		Flat slide valve with diaphragm control	
Mounting		On sub-bases (see sheet 2.940)	
Connection		G 1/2 (sub-base)	
Nominal size		12 mm	
Standard nominal flow rate (1 → 4)		3000 l/min (basic valve)	
Pressure range		1.5 to 10 bar	1.5 to 8 bar
Response time at 6 bar		On: 35 ms, Off: 36 ms	On: 44 ms, Off: 74 ms
Ambient temperature		– 5 to + 40 °C	
Medium temperature		– 10 to + 60 °C	
Materials		Housing: die-cast aluminium, diaphragms: polyurethane, seals: Perbunan	
Weight		0.870 kg	0.760 kg
DC	Standard voltages	12, 24 V	12, 24 V
AC	Special voltages	12 to 240 V	12 to 220 V
	Standard voltages	24, 42, 110, 220 V/50 Hz	24, 42, 110, 220 V/50 Hz or 50 and 60 Hz
	Special voltages	12 to 380 V/50 or 60 Hz	12 to 240 V/50 or 60 Hz
Power consumption	DC	12 W	4.5 W
	AC	Hold: 22 VA, pull: 30 VA	Hold: 6 VA, pull: 7.5 VA
Duty cycle		100%	
Degree of protection		IP 65 (DIN 40050)	

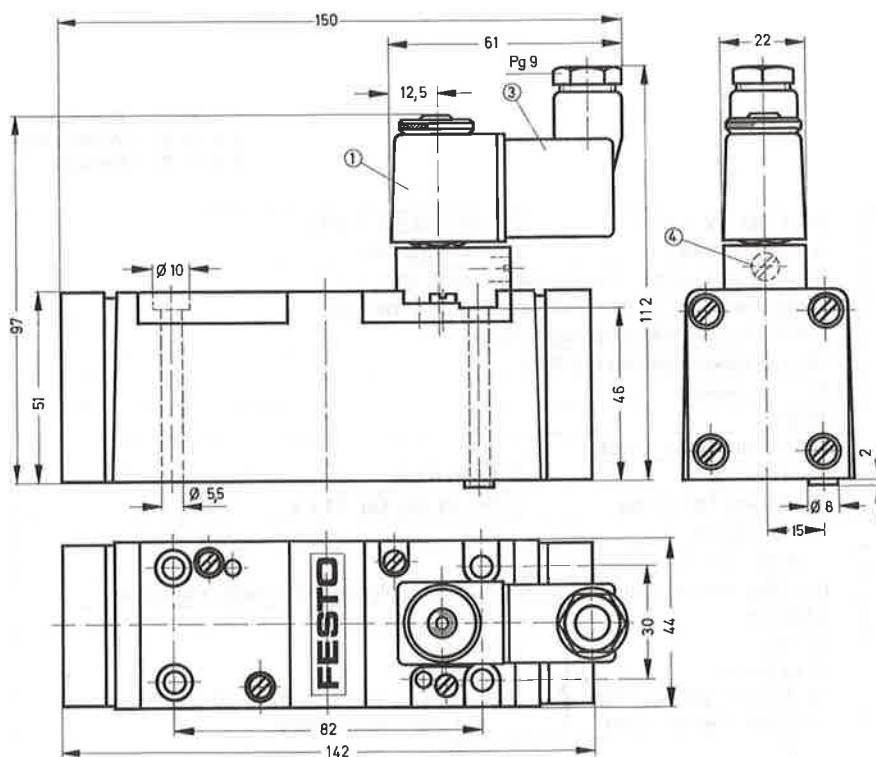
* Solenoid coils, see sheets 2.592, 2.592.1; ** Solenoid coils, see sheets 2.591, 2.591.1.

Type CM-5/2-1/2-CH



Type CM-5/2-1/2-FH

Permissible tightening torque for the securing nut of the solenoid coil = 1.5 Nm



- ① Solenoid coil can be rotated
- ② Plug can be repositioned by 90°
- ③ Plug can be repositioned by 180°
- ④ Manual override