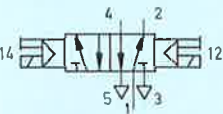


Festo cassette valve for mounting on Festo and other international standard sub-bases

Double solenoid valve,
detented

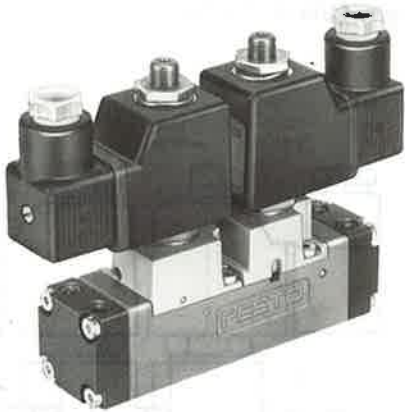
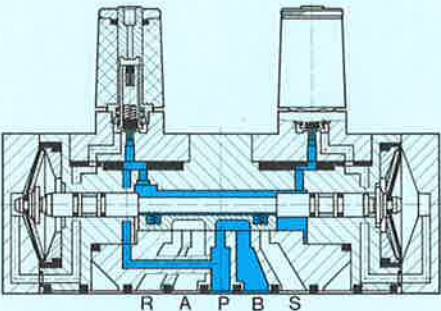
with manual override
without sub-base

Type CJM-5/2-1/4-CH



The valve is actuated by means of alternate switching of the voltage supply to the solenoid coils, and retains its switched position, even after the signal is removed, until a countersignal is received.

Note:
Basic cassette valve, set of wearing parts and additional valve variants, see sheet 2.890.



Mounting capabilities:
These cassette valves can be directly mounted onto Festo sub-bases (sheet 2.940); alternatively, adapters can be used to mount the valves onto standard sub-bases as per CETOP and DIN (VDMA) see sheets 2.950, 2.952.
4 mounting screws (M4 x 40 DIN 84) are supplied with each valve.

Accessories:
For sockets and accessories, see sheets 2.594 to 2.598.

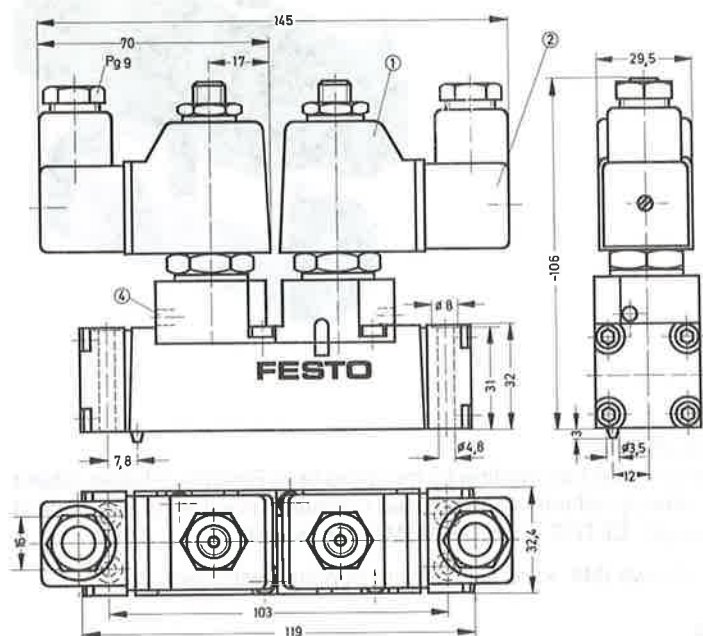
10

- 1 (P) = Supply port
- 2, 4 (A, B) = Working or outlet lines
- 3, 5 (R, S) = Exhausts

Order code	with socket	5955 CJM-5/2-1/4-CH	
Part No./Type	without socket	+ voltage data	
Medium		Example: 5955 CJM-5/2-1/4-CH + voltage data – OD	
Design		Compressed air, filtered (lubricated or unlubricated)	
Mounting		Flat slide valve with diaphragm control	
Connection		On sub-base	
Nominal size		G 1/4 (sub-base)	
Standard nominal flow rate (1 → 4)		6.5 mm	
Pressure range		1140 l/min (basic valve)	
Response time at 6 bar		1.5 to 10 bar	
Ambient temperature		21 ms	
Medium temperature		– 5 to + 40 °C	
Materials		– 10 to + 60 °C	
Weight		Housing: die-cast aluminium; diaphragms, polyurethane; seals: Perbunan	
DC	Standard voltages	0.790 kg	
AC	Special voltages	12, 24 V	} Solenoid coils, see sheets 2.592, 2.592.1
	Standard voltages	12 to 240 V	
	Special voltages	24, 42, 110, 220 V/50 Hz 24 to 380 V/50 or 60 Hz	
Power consumption	DC	12 W	
	AC	Hold: 22 VA, pull: 30 VA	
Duty cycle		100%	
Degree of protection		IP 65 (DIN 40050)	

Solenoid actuated valves
5/2-way valves, indirectly actuated, G 1/4

Type CJM-5/2-1/4-CH



- ① Solenoid coil can be rotated
- ② Plug can be repositioned by 90°
- ③ Plug can be repositioned by 180°
- ④ Manual override

- 1 (P) = Supply port
- 2, 4 (A, B) = Working or outlet lines
- 3, 5 (R, S) = Exhausts

