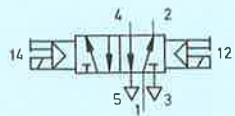


Festo cassette valves for mounting on Festo and other international standard sub-bases

Double solenoid valve, detented

with manual override without sub-base

Type CJM-5/2-1/2-CH
CJM-5/2-1/2-FH

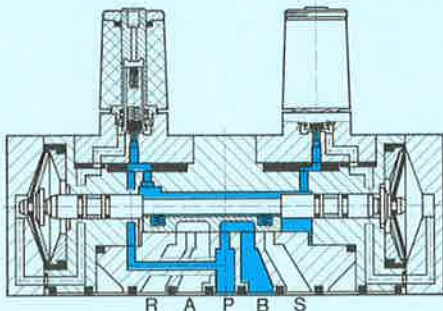


The valve is actuated by means of alternate switching of the voltage supply to the solenoid coils, and retains its switched position even after the signal is removed, until a countersignal is received.

Note:

Basic cassette valve, set of wearing parts and additional valve variants, see sheet 2.892.

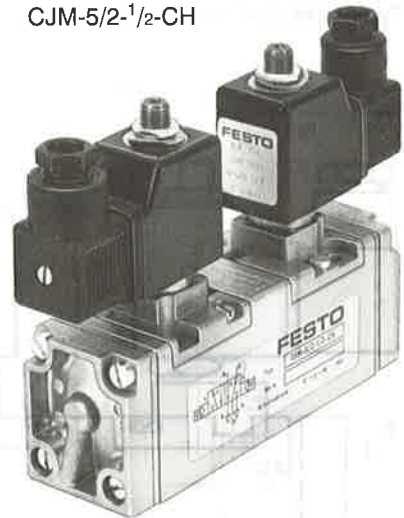
- 1 (P) = Supply port
4, 2 (A, B) = Working or outlet lines
5, 3 (R, S) = Exhausts



CJM-5/2-1/2-FH



CJM-5/2-1/2-CH



10

Mounting capabilities:

These cassette valves can be directly mounted onto Festo sub-bases (sheet 2.940); alternatively, adapters can be used to mount the valves onto standard sub-bases as per CETOP and DIN (VDMA) (sheets 2.960, 2.962).

4 mounting screws (M5 x 55 DIN 84) are supplied with each valve.

Accessories:

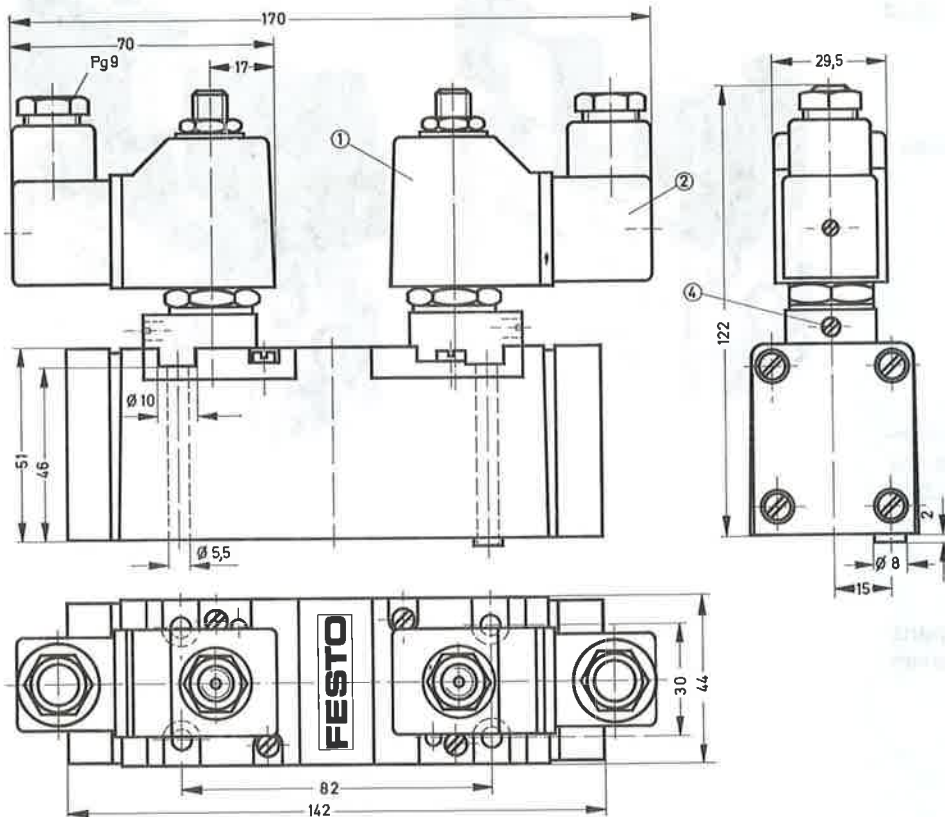
For sockets and accessories, see sheets 2.594 to 2.598.

Solenoid actuator, 50 and 60 Hz (CH), 2.885.

Order code Part No./Type		with socket	
		without socket	
Medium		6112 CJM-5/2-1/2-CH + voltage data	
Design		6228 CJM-5/2-1/2-FH + voltage data	
Mounting		Example: 6112 CJM-5/2-1/2-CH + voltage data – OD	
Connection		Compressed air, filtered (lubricated or unlubricated)	
Nominal size		Flat slide valve with diaphragm control	
Standard nominal flow rate (1 → 4)		On sub-bases	
Pressure range		G 1/2 (sub-base)	
Switching time at 6 bar		12 mm	
Ambient temperature		3000 l/min (basic valve)	
Medium temperature		1.5 to 10 bar	
Materials		1.5 to 8 bar	
Weight		30 ms	
DC	Standard voltages	– 5 to +40 °C	
AC	Special voltages	– 10 to +60 °C	
Power consumption	Standard voltages	Housing: die-cast aluminium; diaphragms: polyurethane, seals: Perbunan	
Duty cycle	Special voltages	1.100 kg	
Degree of protection	Standard voltages	0.820 kg	
	Special voltages	12, 24 V	
	Standard voltages	6 to 240 V	
	Special voltages	12, 24 V	
	Standard voltages	12 to 220 V	
	Special voltages	24, 42, 110, 220 V/50 Hz	
	Standard voltages	24, 42, 110, 220 V/50 Hz or 50 and 60 Hz	
	Special voltages	6 to 380 V/50 or 60 Hz	
	Standard voltages	8 to 240 V/50 or 60 Hz	
	Special voltages	4.5 W	
	Standard voltages	Hold: 22 VA, pull: 30 VA	
	Special voltages	Hold: 6 VA, pull: 7.5 VA	
	Standard voltages	100%	
	Special voltages	IP 65 (DIN 40050)	

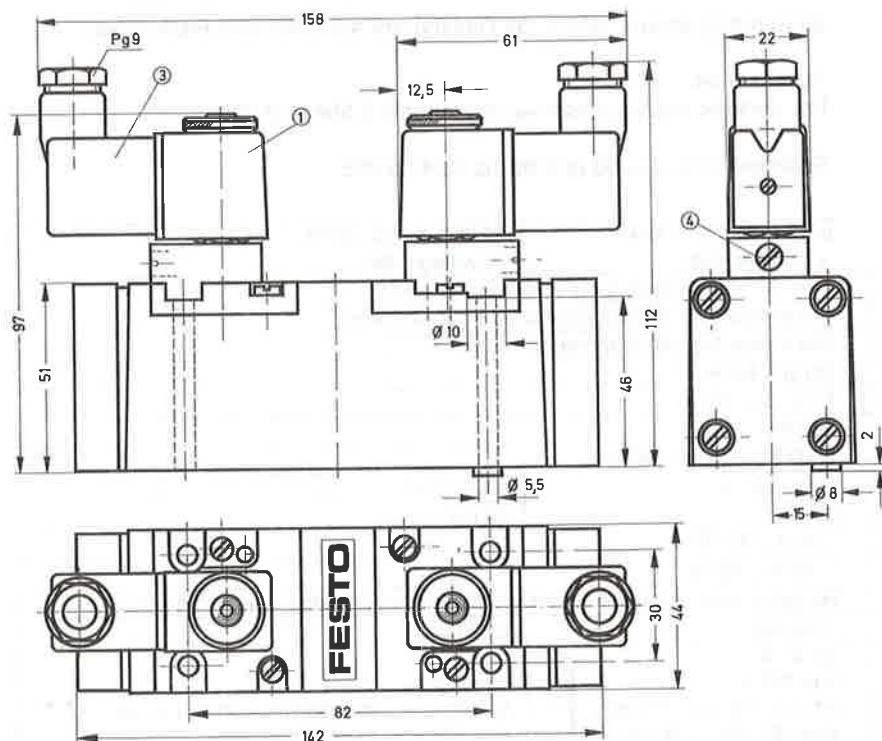
* Solenoid coils, see sheets 2.592, 2.592.1; ** Solenoid coils, see sheets 2.591, 2.591.1.

Type CJM-5/2- $1/2$ -CH



Type CJM-5/2- $1/2$ -FH

Permissible tightening torque for the securing nut of the solenoid coil = 1.5 Nm



- ① Solenoid coil can be rotated
- ② Plug can be repositioned by 90°
- ③ Plug can be repositioned by 180°
- ④ Manual override

- 1 (P) = Supply port
- 2, 4 (A, B) = Working or outlet lines
- 3, 5 (R, S) = Exhausts