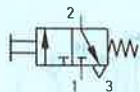


Pushbutton valve
(Spring Return)
Type K-3-M 5



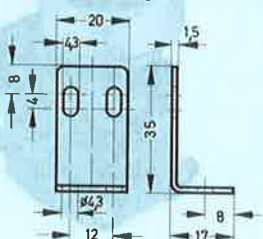
Finger lever valve
Type TH-3-M 5

Hand/knee valve
Type F-3-M 5

Accessories:

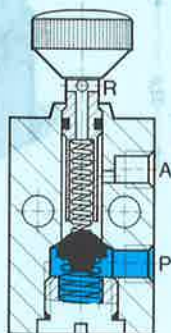
Mounting bracket
Order code 9634 HV-M 5

Complete with:
1 mounting bracket, 2 cheesehead screws M 4 × 20
DIN 912, 2 hexagon nuts and spring washers

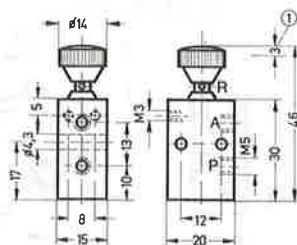


The exhaust air is directed through the stem.

Example: Type K-3-M 5



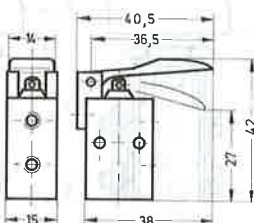
Type K-3-M 5



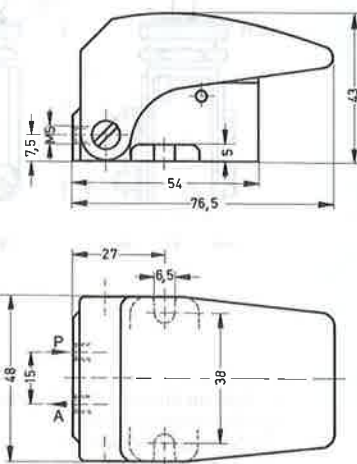
① Switching travel



Type TH-3-M 5



Type F-3-M 5



1 (P) = Supply port (or vacuum)
2 (A) = Working or outlet line
3 (R) = Exhaust

Order code	Part No./Type	3660 K-3-M 5	6758 TH-3-M 5	4452 F-3-M 5
Medium		Compressed air (filtered lubricated or non lubricated) can be used for vacuum*		
Design		Poppet valve, directly actuated in one direction, with return spring		
Mounting		2 through-holes in housing		(Flange eyelets) Baseplate
Connection		M 5		
Nominal size		2 mm		
Standard nominal flow rate (P→A)		80 l/min		
Pressure range		−0.95 to 8 bar		
Actuating force at 6 bar operating pressure		23 N (2.3 kp)	8 N (0.8 kp)	7 N (0.7 kp)
Temperature range		−10 to +60 °C		
Materials		Housing: blue anodized aluminium; seals: perbunan		Housing: die-cast zinc
Weight		0.028 kg	0.037 kg	0.165 kg

* Vacuum connected to P