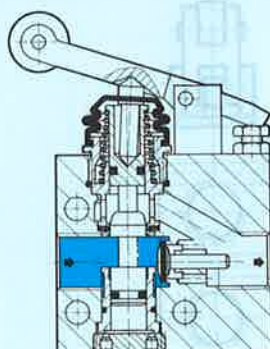


Flow control valve
cam-operated
with roller lever

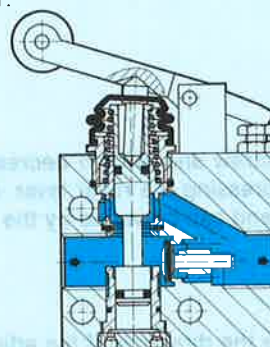
Type GG- $1/4-3/8$
GGO- $1/4-3/8$



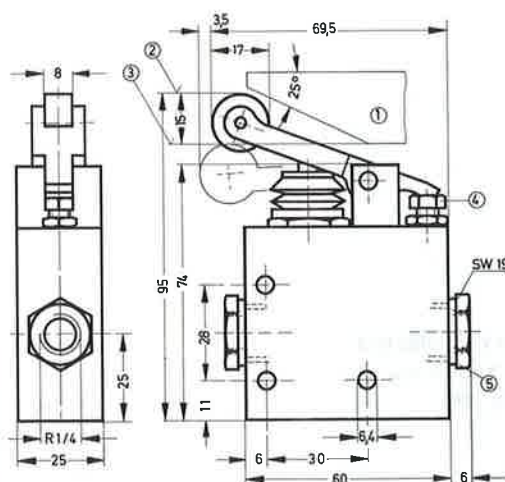
With Type GG, the needle valve is gradually opened by actuation of the roller lever.



With Type GGO, the needle valve is gradually closed by actuation of the roller lever.



In the opposite flow direction (against the direction of the arrow), is full free flow independent of initial roller lever position.



- ① Control cam
- ② Rest position
- ③ Actuating position
- ④ Adjusting screw for pre-set flow control
- ⑤ Reducing bush $B-1/4 \text{ i-}3/8 \text{ a}$

Note:

The dimension $15 + 0.5$ for the roller lever travel includes the pre-set control travel.



These valves are used to vary a preselected flow during the movement sequence of single or double acting cylinders. This makes it possible, for example, with single-acting and double-acting cylinders, to control a preselectable starting speed during operation.

The flow is adjusted with an adjustment screw and is then decreased or increased (depending on the valve) by depressing the roller lever. Flow is infinitely variable within the actuation range and can be varied by the design of the control cam.

The arrows on the inscription label indicate the direction of the controlled flow.

Reducing bushings $D-1/4 \text{ i-}3/8 \text{ a}$ are supplied with the valve to reduce the ports to $G^{1/4}$. The standard nominal flow rate is reduced by approx. 10%.

Examples of applications, see sheet 2.600.

Order code	3633 GG- $1/4-3/8$		3634 GGO- $1/4-3/8$
Medium	Compressed air, filtered (lubricated or unlubricated)		
Design	Cam-operated flow control valve with roller lever		
Mounting	Through-holes in housing		
Connection	$G^{3/8}$		
Nominal size	in flow control direction	8 mm	8 mm
	free flow	8.5 mm	8.5 mm
Standard nominal flow rate	in flow control direction	0 to 870 l/min	0 to 950 l/min
	free flow	1150 l/min	1150 l/min
Pressure range	0.03 to 8 bar		
Actuation force at 6 bar	32 N ($\approx 3.2 \text{ kp}$)		
Temperature range	-10 to +60° C		
Materials	Housing: blue anodized aluminium; seals: perbunan		
Weight	0.380 kg		0.400 kg