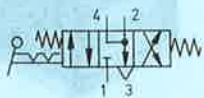


**Toggle valve, spring centered with  
manual detent**  
**Type H-4/3-M5**



This 4/3-way toggle valve is a manually operated signal input element with a nonoverlapping switching function. When the lever is in its central position, ports A and B are both exhausted.

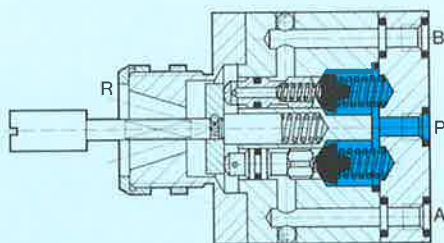
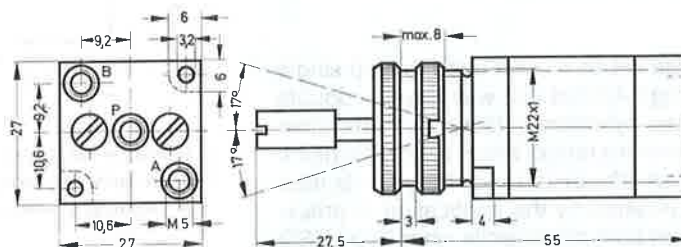
After the lever has been moved in one direction or the other it automatically returns to its central position. It can, however, also be locked in either end position by turning the lever through 90 degrees.



6

**Types of mounting:**

- Panel mounting, installation dia. 22.5 mm
- Flange mounting on a mounting plate to be provided separately, 2 cheesehead screws M3 × 45 DIN 84, galvanized, are included with the delivery.



- 1 (P) = Supply port  
4, 2 (A, B) = Working or outlet lines  
3 (R) = Exhaust

Order code	Part No./Type	7334 H-4/3-M 5
Medium	Compressed air (filtered, lubricated and unlubricated)	
Design	Poppet valve, directly actuated in both directions, with return spring	
Mounting	Panel mounting or mounting on sub-base	
Connection	M 5 or mounting on sub-base (sealing by O-rings)	
Nominal size	4 mm	
Standard nominal flow rate (P→A)	125 l/min	
Pressure range	0 to 8 bar	
Actuating force at 6 bar operating pressure	8 N (0.8 kp)	
Temperature range	– 10 to +60 °C	
Materials	Housing: blue anodized aluminium; seals: perbunan	
Weight	0.100 kg	