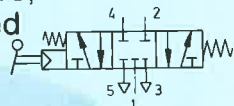


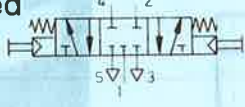
Hand lever valve,
spring centered

Type H-5/3-1/4



Double pushbutton valve,
spring centered

Type T-5/3-1/4



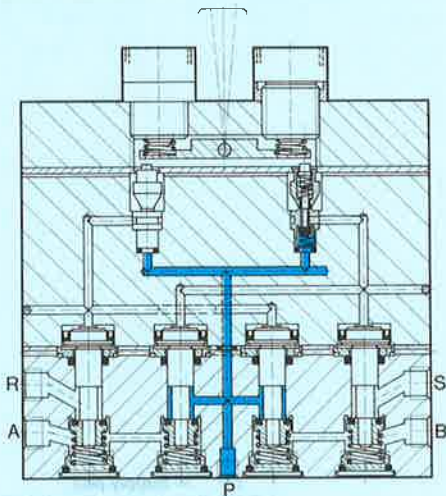
In their neutral position, these valves keep the piston of a double acting cylinder clamped under pressure.

They are thus especially suitable for positioning, emergency stopping and holding double acting cylinders in any desired position.

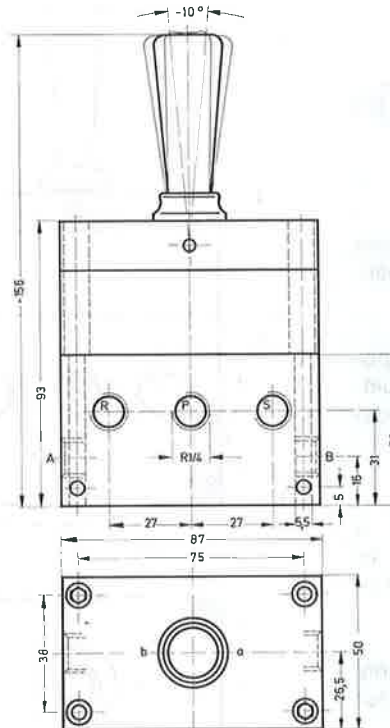
Thanks to the separate exhaust outlets R and S, it is possible, by means of screwed-in exhaust air restrictors, to control the advance and return speed of the cylinder.

Speed control valves must be used only at the exhaust ports to prevent cylinder creep.

Exhaust air restrictors with silencer, order code 4579 GRU-1/4 (see sheet 2.622, 9517 GRU-1/4-B)

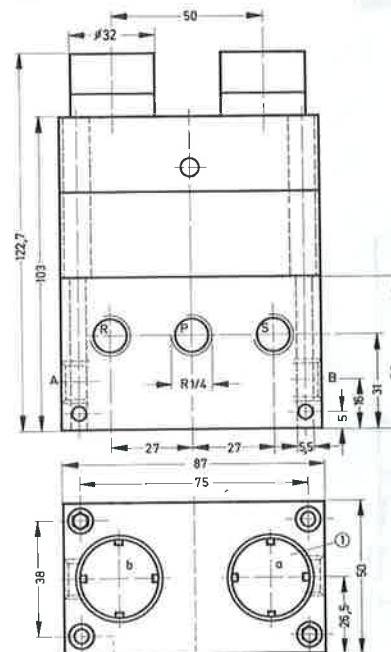


Type H-5/3-1/4



6

Type T-5/3-1/4



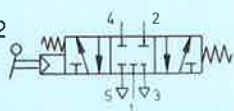
① Pushbutton panel can be written on

- 1 (P) = Supply port
- 4, 2 (A, B) = Working or outlet lines
- 5, 3 (R, S) = Exhaust

Order code	Part. No/Type	4577 H-5/3-1/4	4578 T-5/3-1/4
Medium		Compressed air (filtered, lubricated or unlubricated)	
Design		Poppet valve, indirectly actuated, spring centered	
Mounting		Through-holes in housing	
Connection		G 1/4	
Nominal size		7 mm	
Standard nominal flow rate (P → A)		680 l/min	
Pressure range		2 to 10 bar	
Actuating force at 6 bar operating pressure		5 N (0.5 kp)	8 N (0.8 kp)
Temperature range		-10 to +60 °C	
Materials		Housing: blue anodized aluminium; seals: perbunan	
Weight		1.060 kg	1.160 kg

Hand lever valve, spring centered

Type H-5/3-1/2



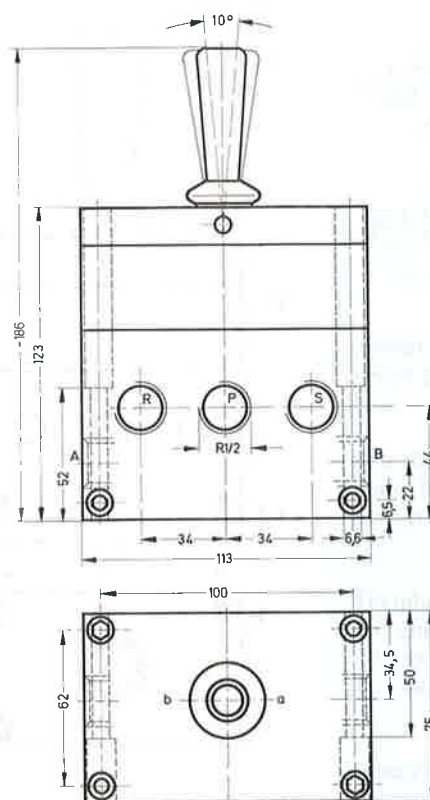
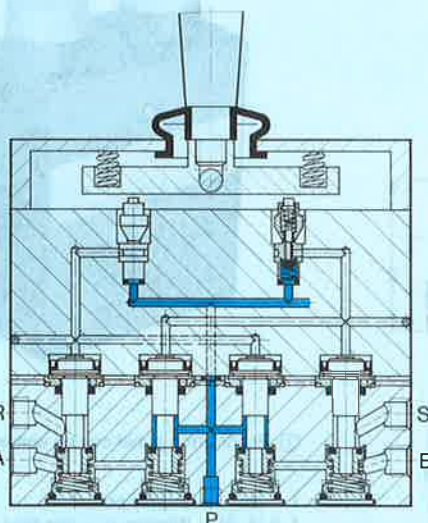
In their neutral position, these valves keep the piston of a double acting cylinder clamped under pressure.

They are thus especially suitable for positioning, emergency stopping and holding double acting cylinders in any desired position.

Thanks to the separate exhaust outlets R and S, it is possible, by means of screwed-in exhaust air restrictors, to control the advance and return speed of the cylinder.

Speed control valves must be used only at the exhaust ports to prevent cylinder creep.

Exhaust air restrictors with silencer, order code 9519 GRU-1/2-B (see sheet 2.622)



- 1 (P) = Supply port
- 4, 2 (A, B) = Working or outlet lines
- 5, 3 (R, S) = Exhaust

Order code	Part. No/Type	4920 H-5/3-1/2
Medium	Compressed air (filtered, lubricated or unlubricated)	
Design	Poppet valve, indirectly actuated, spring centered	
Mounting	Through-holes in housing	
Connection	G 1/2	
Nominal size	12 mm	
Standard nominal flow rate (P→A)	2700 l/min	
Pressure range	2 to 10 bar	
Actuating force at 6 bar operating pressure	5 N (0.5 kp)	
Temperature range	- 10 to +60 °C	
Materials	Housing: blue anodized aluminium; seals: perbunan	
Weight	2.760 kg	