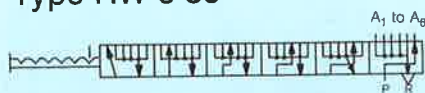


Selector valve Type HW-6-38



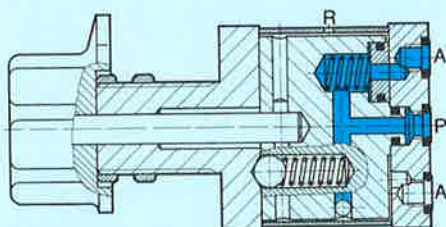
Dial for HW, Type HWF-6-38 for indicating the switch positions

The selector valve is a manually operated directional control valve on which a flat slide connects the P port to one of the 6 outlet ports. The outlet ports which are not selected are jointly exhausted. Switching takes place without overlap. The 6 switching positions are determined by a ball detent.

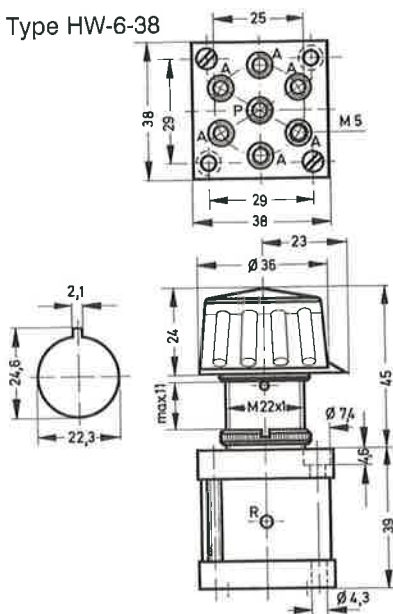
The selector switch is supplied with a rotary button and indicator arrow or with a lockable manual rotary button.

The selector valve is mounted either by flanging to a sub-base which must be provided separately (O-rings for sealing are included) or in a front panel.

Installation dia. for HW-6-38 22.5 mm



Type HW-6-38



- 1 (P) = Supply port
- 2 (A) = Working or outlet line
- 3 (R) = Exhaust

Type HWF-6-38



The self-adhesive dial has a hole 22.5 mm diameter. Use knock-out to enlarge the hole to 28 mm diameter to accommodate the key actuator.

Order code	Part No./Type	7199 HW-6-38	7222 HWF-6-38
Medium		Compressed air (filtered, lubricated or unlubricated)	
Design		Flat slide valve	
Mounting		Panel mounting or mounting on sub-base	
Connection		M 5 or mounting on sub-base (sealing by O-rings)	
Nominal size		3.2 mm	
Standard nominal flow rate (P→A)		180 l/min	
Pressure range		0 to 8 bar	
Actuating force at 6 bar		1 Nm (0.1 kpm)	
Temperature range		- 10 to +60 °C	
Materials		Housing: Aluminium, steel; seals: perbunan	
Weight		0.170 kg	0.005 kg