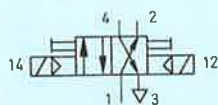


Double solenoid valve

with manual override

Type JMC-4-1/4



The valve is actuated by means of alternate switching of the voltage supply to the solenoid coils, and retains its switched position, even after the signal is removed, until a counter-signal is received.

The valves can be used as 3/2-way valves by blanking off line A or B.



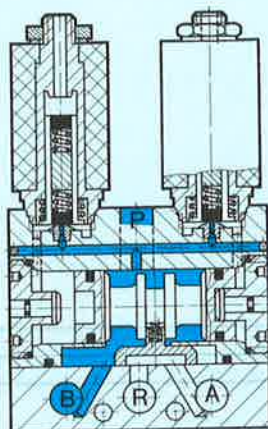
Accessories:

For sockets and accessories, see sheets 2.594 to 2.598.

Plug G 1/4

Order code 3569 B-1/4

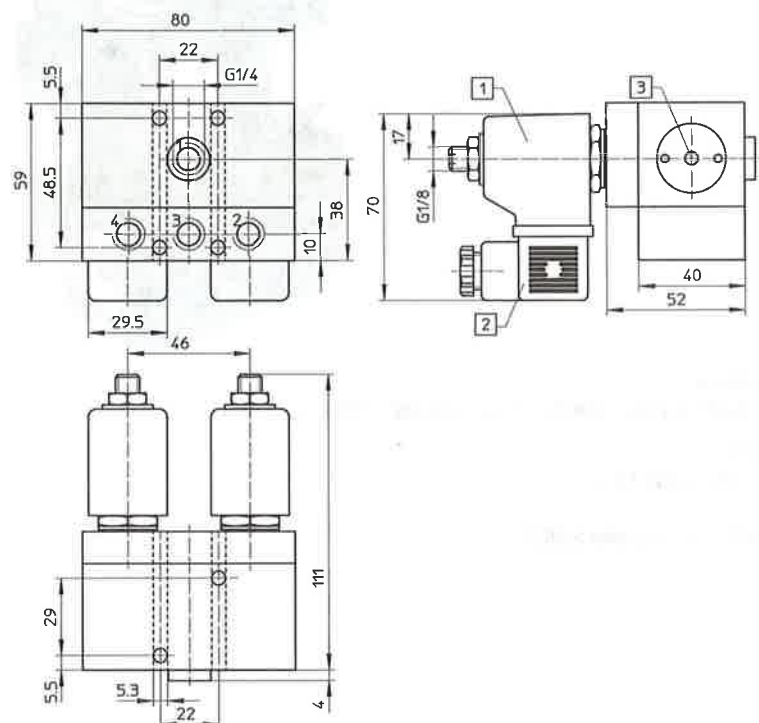
Manifold – see sheet 2.928.



- 1 (P) = Supply line
- 4, 2 (A, B) = Working or outlet lines
- 3 (R) = Exhaust

Order code Part No./Type	with socket	2136 JMC-4-1/4 + voltage data	
	without socket	Example: 2136 JMC-4-1/4 + voltage data – OD	
Medium		Compressed air, filtered (lubricated or unlubricated)	
Design		Flat slide valve	
Mounting		Through-holes in housing	
Connection		G 1/4	
Nominal size		6.5 mm	
Standard nominal flow rate (1 → 4)		920 l/min	
Pressure range		2 to 10 bar	
Response time at 6 bar		25 ms	
Ambient temperature		– 5 to + 40 °C	
Medium temperature		– 10 to + 60 °C	
Materials		Housing: hard anodized aluminium; seals: Perbunan	
Weight		0.980 kg	
DC	Standard voltages	12, 24 V	} Solenoid coils, see sheets 2.592, 2.592.1
	Special voltages	12 to 220 V	
AC	Standard voltages	24, 42, 110, 220 V/50 Hz	
	Special voltages	24 to 380 V/50 or 60 Hz	
Power consumption	DC	12 W	
	AC	Hold: 22 VA, pull: 30 VA	
Duty cycle		100%	
Degree of protection		IP 65 (DIN 40050)	

Type JMC-4-1/4



- 1 Solenoid coil can be rotated
- 2 Plug can be repositioned by 180°
- 3 Manual override

- 1 (P) = Supply line
- 4, 2 (A, B) = Working or outlet lines
- 3 (R) = Exhaust

Wearing parts kit

For Type	JMC-4-1/4
Order code	104 197

