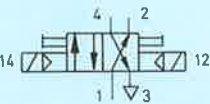




Double solenoid valve
with manual override
Type JMF-4-1/8



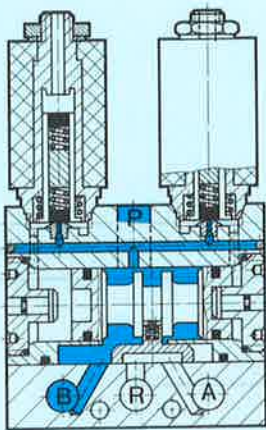
The valve is actuated by means of alternate switching of the voltage supply to the solenoid coils, and retains its switched position, even after the signal is removed, until a counter-signal is received.

The valves can be used as 3/2-way valves by blanking off line A or B.

Accessories:
For sockets and accessories, see sheets 2.594 to 2.598.

Plug G1/8
Order code 3568 B-1/8

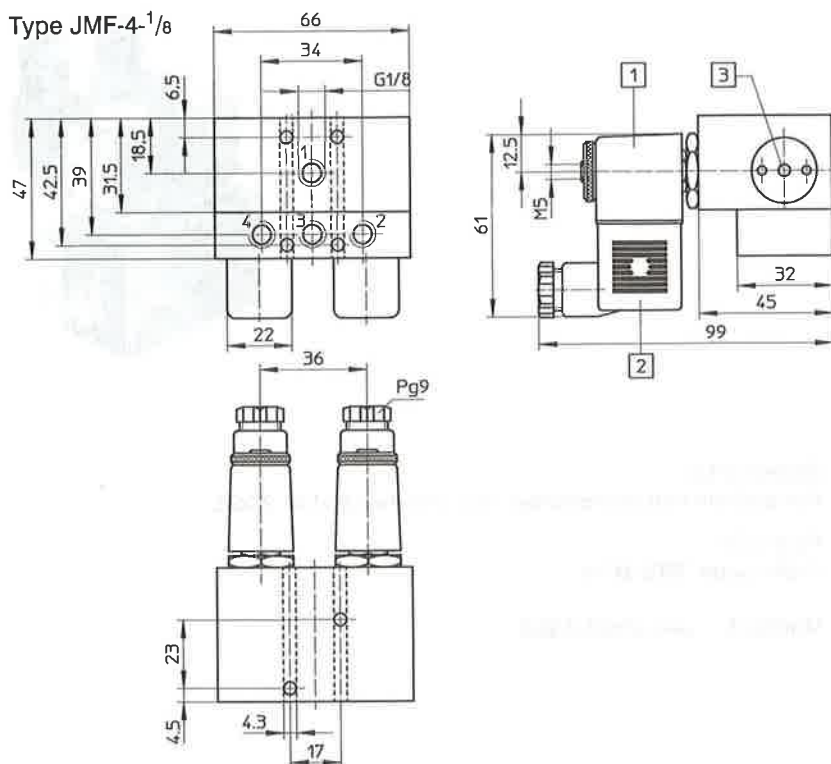
Manifold – see sheet 2.928.



- 1 (P) = Supply line
- 4, 2 (A, B) = Working or outlet lines
- 3 (R) = Exhaust

Order code	with socket	4556 JMF-4-1/8	}	Solenoid coils, see sheets 2.591, 2.591.1
Part No./Type	without socket	+ voltage data		
Medium		Example: 4556 JMF-4-1/8 + voltage data – OD		
Design		Compressed air, filtered (lubricated or unlubricated)		
Mounting		Flat slide valve		
Connection		Through-holes in housing		
Nominal size		G 1/8		
Standard nominal flow rate (1 → 4)		4 mm		
Pressure range		330 l/min (basic valve)		
Switching time at 6 bar		2 to 8 bar		
Ambient temperature		18 ms		
Medium temperature		– 5 to + 40 °C		
Materials		– 10 to + 60 °C		
Weight		Housing: hard anodized aluminium; seals: Perbunan		
DC	Standard voltages	0.510 kg		
AC	Special voltages	12, 24 V		
	Standard voltages	12 to 220 V		
	Special voltages	24, 42, 110, 220 V/50 Hz or 50 and 60 Hz		
Power consumption	DC	12 to 240 V/50 or 60 Hz		
Duty cycle	AC	4.5 W		
Degree of protection		Hold: 6 VA, pull: 7.5 VA		
		100%		
		IP 65 (DIN 40050)		

Type JMF-4-1/8



Permissible tightening torque for the securing nut of the solenoid coils = 150 Ncm (15 kpcrn)

- ① Solenoid coil can be rotated
 - ② Plug can be repositioned by 180°
 - ③ Manual override
- 1 (P) = Supply line
 - 4, 2 (A, B) = Working or outlet lines
 - 3 (R) = Exhaust

Wearing parts kit

For Type	JMF-4-1/8
Order code	104 195

