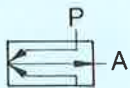


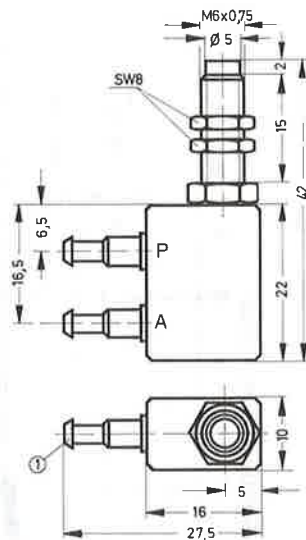
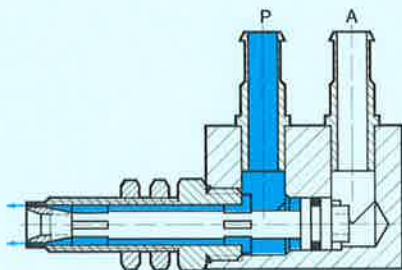
Reflex sensor Type RML-4.8-S



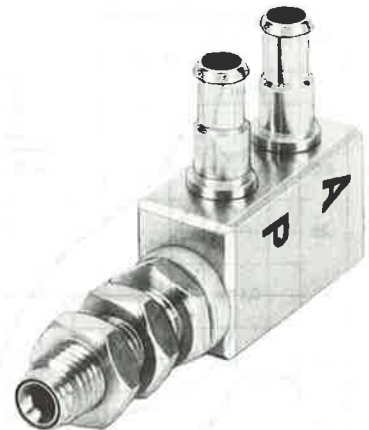
This reflex sensor is used as a non-contacting signal generator. Possible uses include the sensing of indicating instruments, the monitoring of pressing and punching tools (thicknesses, perforations, position, sheet doubling), edge sensing control, magazine checking, counting, measuring.

The operation of the reflex sensor is not affected by heavy accumulation of dirt, noise, the danger of explosion, total darkness, transparent or magnetic objects.

The sensor nozzle is supplied with filtered, non-lubricated compressed air via port P. If the constantly escaping air flow is interrupted, a signal pressure ≥ 0.5 mbar is produced at outlet A. This pressure signal can be increased to the desired pressure by using a suitable amplifier.



① Barbed fitting for 4 mm plastic tubing



1 (P) = Supply port
2 (A) = Outlet line

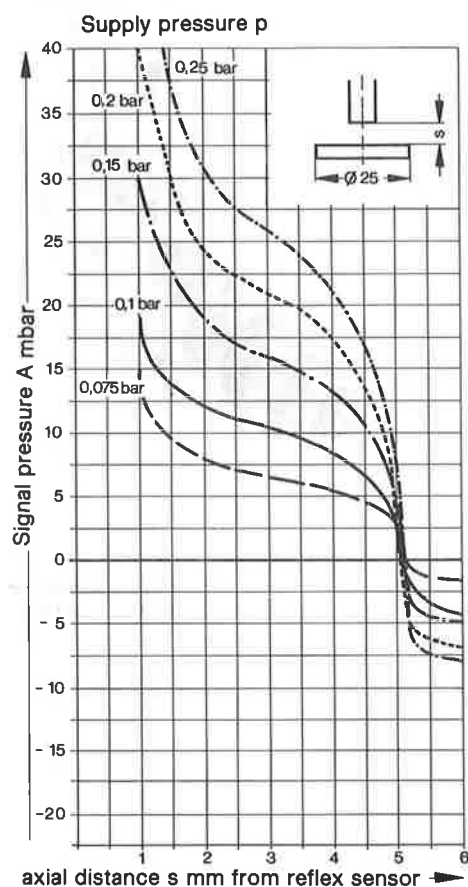
8

Max. sensing distance	Smallest detectable change in distance	Minimum detectable workpiece size with workpiece at rest		
4.8 to 5.1 mm	0.05 mm			
		3.75 x 2.5 mm	3 x 3 mm	3 mm

Order code	Part No./Type	9849 RML-4.8-S
Medium		Compressed air, filtered, non-lubricated
Design		Sensor nozzle without moving parts
Mounting		M 6 x 0.75 with mounting nuts
Installation dia.		6.1 mm
Connection		Barbed fitting for 4 mm plastic tubing
Supply pressure range at P		0.075 to 0.25 bar
Max. supply pressure range		0.5 bar
Signal pressure range at A		See graph
Air consumption at 0.1 bar		15 l/min
Ambient temperature		- 10 to + 60 °C
Medium temperature		- 10 to + 60 °C
Materials		Housing: brass, aluminium: seals NBR
Weight		0.011 kg

Signal pressure as a function of supply pressure and nozzle distance

Axial sensitivity at different supply pressures



Lateral sensitivity

