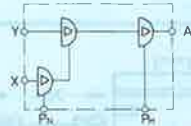
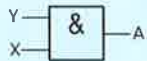
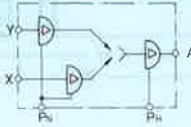
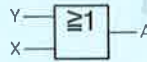


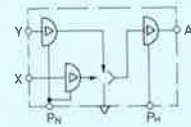
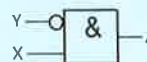
AND module Type ZK-2-R-M5



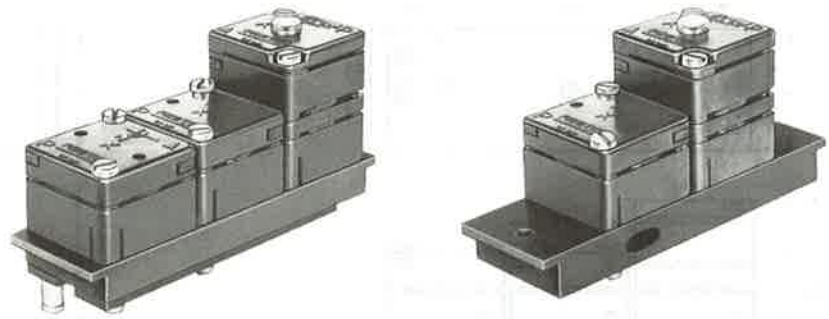
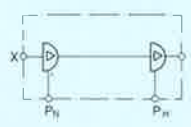
OR module Type OS-2-R-M5



NOT module Type VLO-R-M5



Amplifier module Type VK-R-M5



These modules are used for combining and amplifying signals with a pressure from 0.001 to 0.25 bar which are available as output signals of pneumatic sensors.

Each module has a base plate with 2 n dimensions.

Mounting frames for manifold mounting and control cabinet installation—see sheet 6.430

Function:

Type ZK-2-R-M5

AND operation for pneumatic sensors with amplification. An output signal is present at A if X and Y are simultaneously present.

Type OS-2-R-M5

OR operation for pneumatic sensors with amplification. An output signal A is present if X or Y is present.

Type VLO-R-M5

NOT operation for pneumatic sensors with amplification. An output signal is only present at A if X is present and Y is not present.

Type VK-R-M5

Amplifier module for pneumatic sensors with two-stage amplification. It has the function of a 3/2-way valve which has no flow in its neutral position.

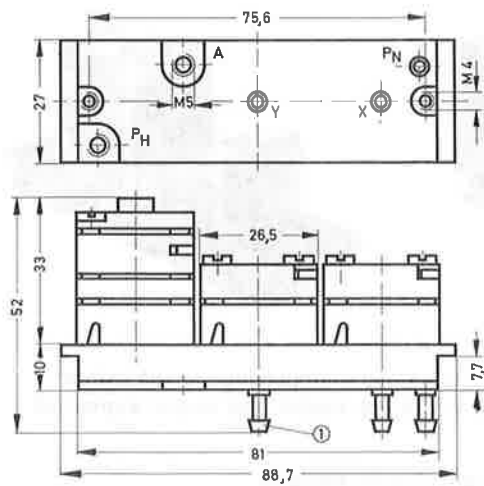
In the base plate, the internal connections are made by means of air channels and, in the case of the OS-2-R-M5 and VLO-R-M5, by means of a dynamic element.

Low pressure is applied to the signal inputs X and Y of the four modules. The output signal at A is a high pressure signal (\cong supply pressure P_H).

It is necessary to supply auxiliary energy with a pressure of 0.1 to 0.25 bar at port P_N .

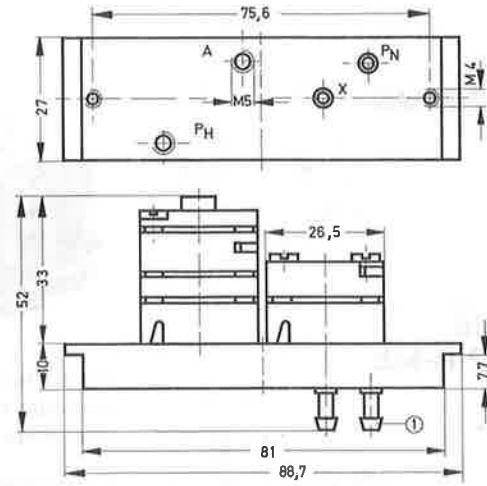
Order code	Part No./Type	7421 ZK-2-R-M5	7423 OS-2-R-M5	7422 VLO-R-M5	7425 VK-R-M5
Medium		Compressed air, filtered, non-lubricated			
Design		Poppet valves, indirectly actuated			
Mounting		On 2 n mounting frame			
Connection		P_N , X, Y: barbed fitting for 4 mm plastic tubing; P_H , A: M5			
Nominal size		Low pressure: 4 mm, high pressure: 2.5 mm			
Standard nominal flow rate ($P \rightarrow A$)		80 l/min			
Supply pressure range at port P_N		0.1 to 0.25 bar			
Supply pressure range at port P_H		1 to 7 bar			
Control pressure range at port X, Y		0.001 to 0.25 bar			
Response pressure		≥ 1 mbar			
Drop-out pressure		< 0.1 mbar			
Constant air consumption in non-actuated state		Low pressure: 1.4 l/min at 0.1 bar; high pressure: 3.6 l/min at 6 bar			
Ambient temperature		-10 to +60° C			
Medium temperature		-10 to +60° C			
Materials		Housing: plastic; seals: perbunan; mounting plate: aluminium, plastic			
Weight		0.087 kg			0.075 kg

Type ZK-2-R-M5
OS-2-R-M5
VLO-R-M5



① Barbed fitting for 4 mm plastic tubing

Type VK-R-M5



Ports:

X, Y = Signal input for control pressure from 0.001 to 0.25 bar
P_N = Inlet for supply pressure 0.1 to 0.25 bar
P_H = Inlet for supply pressure 1.5 to 7 bar
A = Outlet for amplified pressure