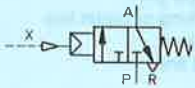


High pressure amplifier element Type VL-3-4-H-20



Accessories:

1n sub-base
Type APL-1 N/H-PK-3
for one amplifier element

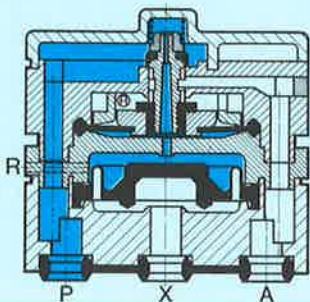
2n sub-base
Type APL-2 N/3 H-M5
for one to three amplifier elements

The amplifier element is secured with M3 cheesehead screws.

Two M3 × 35 DIN 84 galvanized cheesehead screws, order code 208 492, are included with the delivery.

Mounting frame for manifold mounting and control cabinet installation – sheet 6.430

Example: Type VL-3-4-H-20



VL-3-4-H-20



APL-1 N/H-PK-3



APL-2 N/3 H-M5

8

The high pressure amplifier element is a pneumatic switching amplifier with the function of an indirectly actuated 3/2-way valve which has no flow in its neutral position. It is used to amplify low pressure signals to the pressure level of 1 to 7 bar. A rolling diaphragm is used as an actuation element.

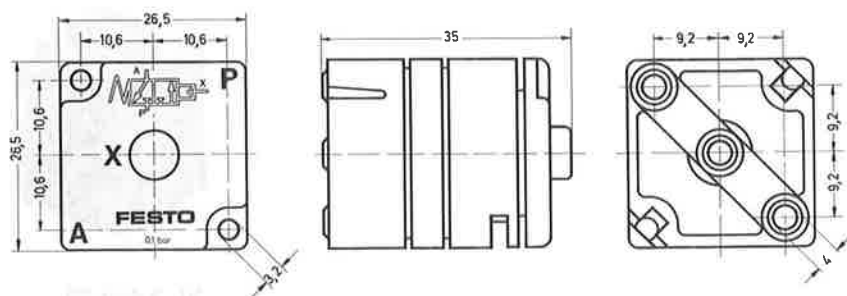
In a non-actuated state, there is a low, constant air consumption from port P to R at the pilot seat. The 3/2-way valve is switched with very little overlap, the element switching quickly by means of the snap action.

The amplifier element is mounted on a 1n or 2n sub-base by means of neck mounting. A seal is included with the delivery.

- 1 (P) = Supply port
- 2 (A) = Working or outlet line
- 3 (R) = Exhaust
- 12 (X) = Pilot line

Order code	Amplifier	7098 VL-3-4-H-20	–	–
Part No./Type	Mounting plate	–	7088 APL-1-N/H-PK-3	7536 APL-2N/3H-M5
Medium	Compressed air, filtered, non-lubricated			
Design	Poppet valve, indirectly actuated in one direction, with return spring			
Mounting	On sub-base	On 1n or 2n mounting frame		
Connection	See sub-base	X: barbed fitting for 4 mm tubing PA: barbed fitting for 3 mm tubing		
Nominal size	4 mm	2.5 mm		
Standard nominal flow rate	80 l/min	–		
Operating pressure range at P	1 to 7 bar	–		
Max. pilot pressure at X	0.25 bar	–		
Response pressure	> 20 mbar	–		
Drop-out pressure	< 8 mbar	–		
Constant air consumption in non-actuated state	3.6 l/min	–		
Ambient temperature	– 10 to + 60 °C			
Medium temperature	– 10 to + 60 °C			
Materials	Housing: plastic; seals: perbunan	Plastic, brass, aluminium	die-cast zinc aluminium	
Weight	0.020 kg	0.015 kg	0.010 kg	0.065 kg

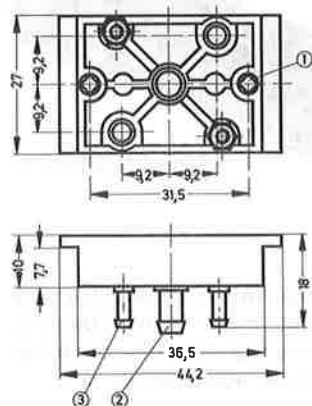
Type VL-3-4-H-20
VL-3-4-H-50



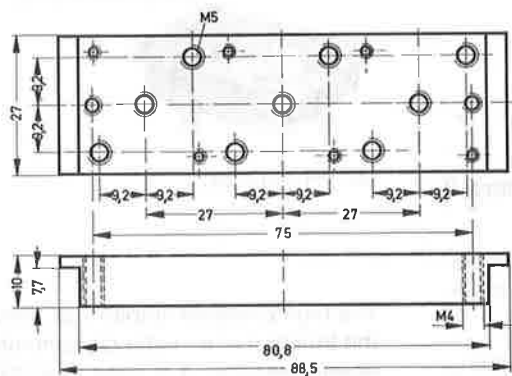
Permissible tightening torque
for mounting screws
10 Ncm (1 kpcm)

- 1 (P) = Supply port
- 2 (A) = Working or outlet line
- 3 (R) = Exhaust
- 12 (X) = Pilot line

Type APL-1 N/H-PK-3



APL-2 N/3 H-M5



- ① For M4 thread
- ② Barbed fitting for 4 mm tubing
- ③ Barbed fitting for 3 mm tubing

