

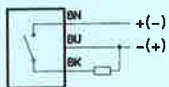
Proximity switch

with yellow light emitting diode and integral protective circuit.
Without mounting kit
with cast in cable:

Type SMEO-4U-K-LED-24

with plug socket:

Type SMEO-4Z-S-LED-24



with cast-in cable:

Type SMEO-4U-K-LED-220



Accessories:

See sheet 2.385 for plug-in units.

For an overview of Festo proximity sensors and mounting kits, see sheets 1.350, 1.351.

Type SMEO-4U-K-LED-24 SMEO-4U-K-LED-220



4

Type SMEO-4U-S-LED-24



These proximity switches are used for contactless position sensing of Festo cylinder series type ENSU and DSNU.

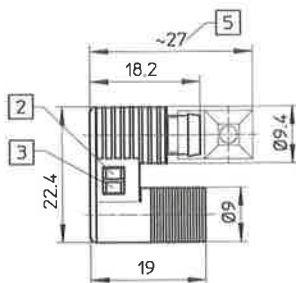
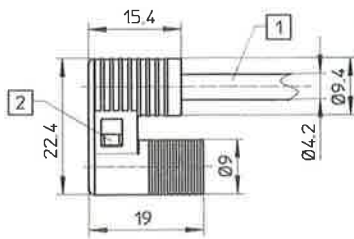
When a magnetic field approaches (e.g. the permanent magnet on the cylinder piston), the proximity switch emits an electrical signal. The electrical connections are also cast in.

The switching state is indicated by a light emitting diode. The yellow LED indicator lights up upon activation. The switch is protected against incorrect polarity.

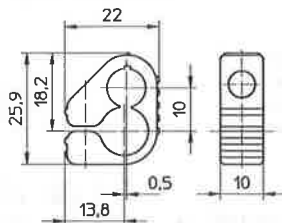
Colour code
BK = black
BN = brown
BU = blue

Order code	Part No./Type	36 198 SMEO-4U-K-LED-24	150 011 SMEO-4U-K-LED-220	36 199 SMEO-4U-S-LED-24
Medium	Magnetic field and electric current			
Design	Electrical signal generator for non-contacting position sensing via magnetic field			
Mounting	On cylinder with mounting kit type SMBR-...			
Connection	3-wire cable	2-wire cable	Plug connection	
Switching capacity	max. 10 W			
Switching current	max. 500 mA			
Switching voltage	12 to 30 V	12 to 250 V	DC voltage AC voltage	12 to 30 V
Volume resistance	0.15 Ω max.			
Reproducible switching accuracy	± 0.1 mm			
Switching frequency	max. 2 kHz.			
Degree of protection to DIN 40050	IP 67			
Temperature range	– 20 to +60 °C			
Materials	Housing, cap: Polymer; cable: PVC			
Weight	0.070 kg	0.070 kg	0.010 kg	

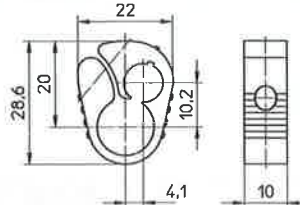
Type SMEO-4U-K-LED-220



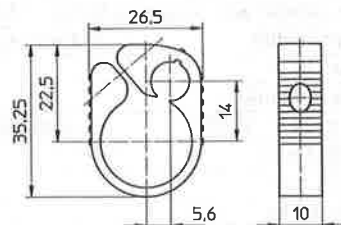
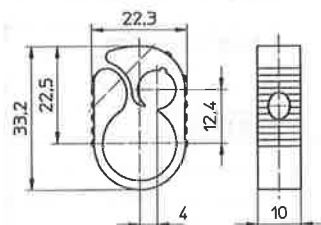
Type SMBR-10



Type SMBR-12



Type SMBR-20



Type SMBR-25

