

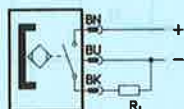
Proximity sensor, inductive

Design proof against interference from welding operations, with light emitting diodes, protective circuit and plug socket.

Without mounting kit

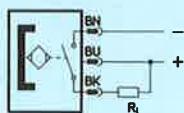
PNP version:

Type SMTSO-1-PS-S-LED-24



NPN version:

Type SMTSO-1-NS-S-LED-24

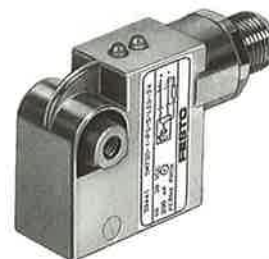


Accessories:

Mounting kit, type SMBT-1
Order code 150 002 SMBT-1

Plug with cable
Angle connector 90° (WD)
or straight (GD).

Order code
30 450 SIM-M12-RS-3GD-3
30 451 SIM-M12-RS-3WD-3



4

These proximity sensors are used in welding installations with strong alternating magnetic fields for contactless position indication with Festo cylinders series "A", piston dia. of 32 to 100 mm with tie rod.

The contactless proximity sensor emits an electric when a magnetic field approaches.

Switching status (yellow) and operating status (green) are indicated by light emitting diodes.

The switch is protected against incorrect polarity and resistant to sustained short circuit to VDE 0160/15.

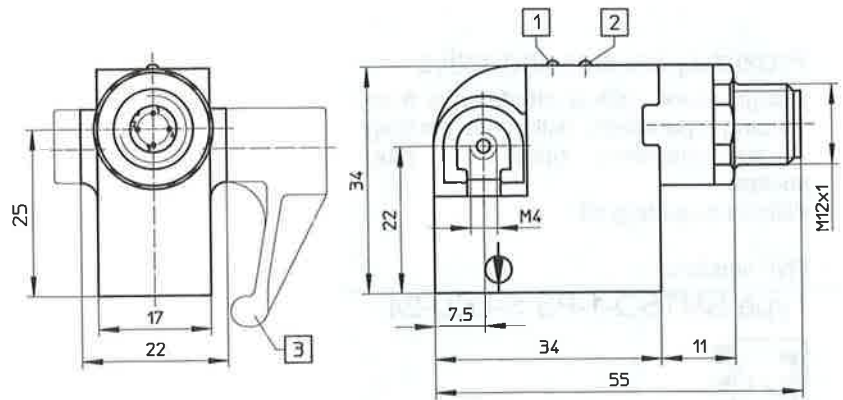
See sheets 1.350, 1.351 for an overview of Festo proximity sensors and mounting kits.

Color code
BK = black
BN = brown
BU = blue

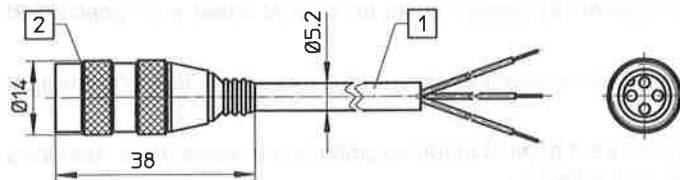
Order code	Part No./Type	30 441 SMTSO-1-PS-S-LED-24	30 449 SMTSO-1-NS-S-LED-24
Medium	Magnetic field and electric current		
Design	Electronic, contactless proximity sensor proof against welding interference		
Mounting	With mounting kit, type SMBT-1 on cylinder		
Connection	Plug connector		
Switching capacity	6 W		
Max. switching current	200 mA		
Switching voltage (V_{op})	10 to 30 V DC voltage		
Residual ripple	10% V_{op}		
Switch output	PNP		NPN
Reproducible switching accuracy	± 0.1 mm		
Switching output	max. 20 Hz		
Degree of protection to DIN 40050	IP 67		
Temperature range	- 25 to + 70 °C		
Materials	Housing: Die-cast Zn, encapsulated in epoxy resin		
Weight	0.070 kg		

Type SMTSO-1-...

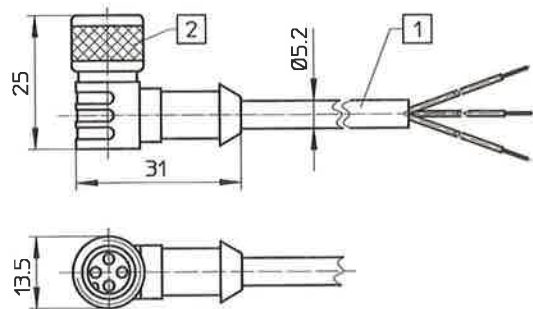
- 1 Green LED – Ready to operate
- 2 Yellow LED – Switching status
- 3 Mounting kit, type SBMT-T



Plug with cable,
type SIM-M12-RS-3GD-3

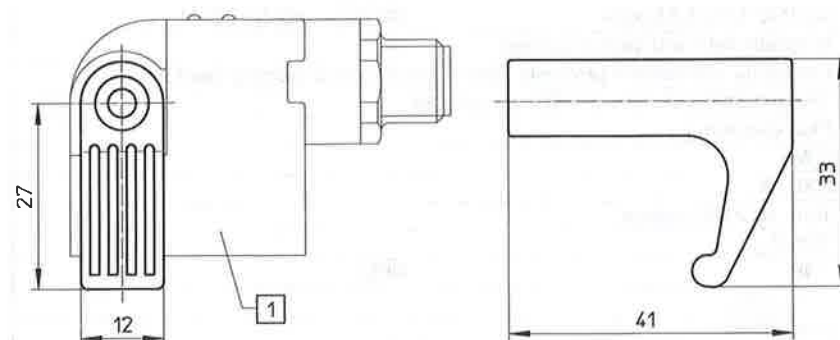


Type SIM-M12-RS-3WD-3



- 1 3-wire cable (3 x 0.5 mm²), 3 m long
- 2 Knurled nut M12 x 1

Mounting kit,
type SMBT-1



- 1 Proximity sensor, type SMTSO-1-...