

Flow control valve, adjustable Type GRO-



This needle type valve is used to regulate air flow, e.g. to control piston speed of cylinders. Air flow is approximately equal in both directions and can be finely adjusted.

Accessories:

Tamper-proof cap for flow control valve
Type GRK-...

for GRO-M 5:
Order Code 6436 GRK-M 5

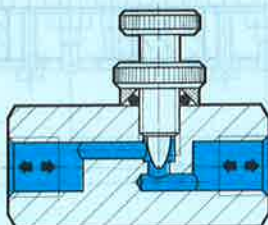
for GRO-1/8:
Order Code 2105 GRK-1/8

Hexagon nut Type GRM-...
for front-panel mounting
for GRO-M 5:
Order Code 6444 GRM-M 5

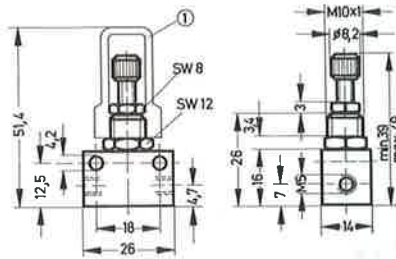
for GRO-1/8:
Order Code 2107 GRM-1/8



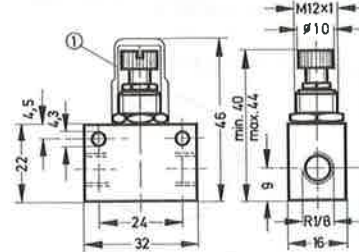
Example: Type GRO-1/8



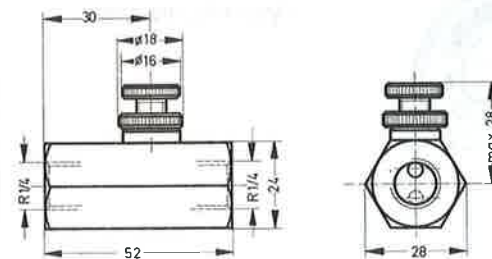
Type GRO-M 5



Type GRO-1/8

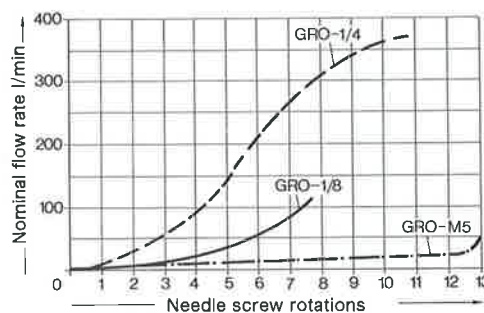


Type GRO-1/4



① Tamper-proof cap

Flow rate as a function of the number of turns of the needle adjustment
(Q-s curve)



Order code	Part No./Type	4804 GRO-M 5	6500 GRO-1/8	2109 GRO-1/4
Medium		Compressed air, filtered (lubricated or unlubricated)		
Design		Flow control valve		
Mounting		2 through-holes in housing, or front-panel mounting		Line fitting
Connection		M 5	G 1/8	G 1/4
Nominal size		2 mm	2 mm	4.5 mm
Flow rate		0 to 45 l/min	0 to 100 l/min	0 to 350 l/min
Pressure range		0 to 10 bar		
Temperature range		-10 to +60° C		
Materials		Housing: aluminium, brass; seals: perbunan		Housing: aluminium, steel; seals: perbunan
Weight		0.020 kg	0.030 kg	0.080 kg