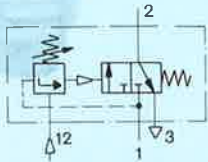


Adjustable pneumatic pressure switch Type VD-3-PK-3

with 2n sub-base

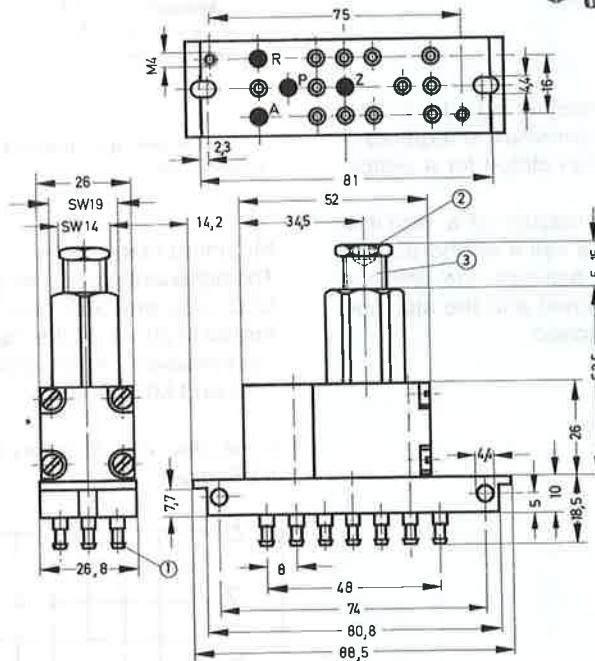
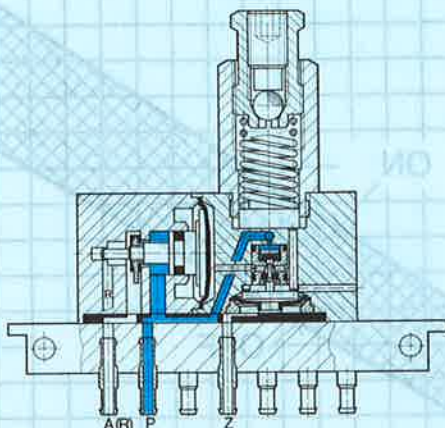


This valve is used when a pressure-dependent signal is required for further switching of a control circuit e.g. when a minimum clamping pressure of a cylinder is reached.

The pressure can be set by means of the adjusting screw.

When this is done, then, as soon as the pilot signal at port Z reaches the preset pressure, the attached 3/2-way valve is actuated. Conversely, the valve switches back when the signal at Z falls below the preset pressure.

Mounting frame for manifold mounting and control cabinet fitting, see sheet 6.430.



- ① Barbed fittings for 3 mm plastic tubing
- ② Locking screw
- ③ Pressure-adjusting screw (1 sub-division \approx approx. 1 bar)

- 1 (P) = Supply port
- 2 (A) = Working or outlet line
- 3 (R) = Exhaust
- 12 (Z) = Control line

11

Order code	Part No./Type	9270 VD-3-PK-3
Medium	Compressed air, filtered (lubricated or unlubricated)	
Design	Poppet valve with return spring	
Mounting	Through-holes in sub-base, or on mounting frame	
Connection	Barbed fittings for 3 mm plastic tubing	
Nominal size	2.5 mm	
Standard nominal flow rate (P → A)	100 l/min	
Operating pressure range	1.8 to 8 bar	
Adjustable pilot pressure	1 to 8 bar	
Accuracy of repetition	Switch-on pressures > 1 bar	$\pm 2\%$
	Switch-off pressures > 1 bar	$\pm 1.5\%$
Reset hysteresis at 6 bar	1.1 bar	
Temperature range	- 10 to + 60 °C	
Materials	Housing: die-cast zinc aluminium; pressure actuator: aluminium adjusting screw: steel; seals: perbunan	
Weight	0.220 kg	