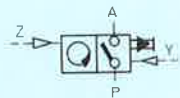


Pneumatic predetermining counter

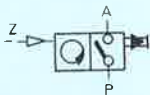
Method of counting – adding, with stationary preset number

for panel mounting
Type PZV-S-E



for mounting on G or H rail
Type PZV-S-E-SGH

with automatic reset
Type PZV-S-E-AUT



These counters add pneumatic signals from zero upwards and emit a pneumatic output signal when the preset number is reached.

Pre-selection takes place by pressing the white lock button and at the same time keying in the preset number. The preset number remains visible at all times in the pre-select window. Once a number has been pre-selected, it will be retained when resetting the counter. It is also possible to alter the preset number during operation. The number of items manufactured or the number of time units which have elapsed can be read off without it being necessary to calculate back.

Accessories:

Protective cover with screwed knob

Order code:

14 663 PZ-SK-2

Protective cover with lock

13 966 PZ-SS-2

For protective covers see sheet 3.285

The following mounting plates are required for mounting a counter of type PZV-S-E-SGH on G or H rail.

Order code:

Mounting plate for G rail to

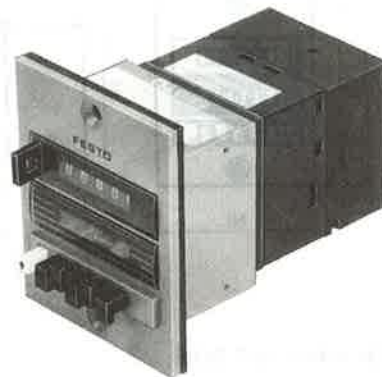
DIN EN 50 035: 19 134 MPL-MUS/PZ-G

Mounting plate for H rail to

DIN EN 50 022: 19 135 MPL-MUS/PZ-H

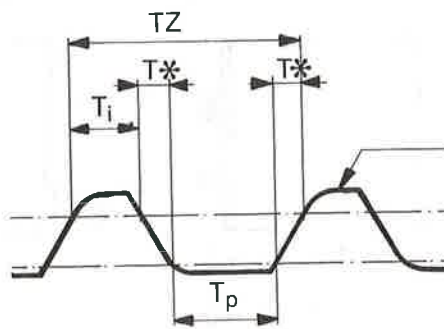


PZV-S-E-SGH



PZV-S-E-AUT

Counting rate for Type PZV-S-E/PZV-S-E-SGH



Maximum pulse rate

$$= \frac{1}{TZ}$$

$$TZ = T_i + T_p + T^*$$

Counting pulses

Response pressure
> 0.8 bar

Release pressure
< 0.15 bar

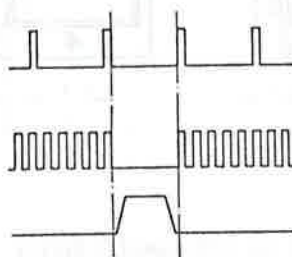
T_i = min. pulse duration

T_p = min. pause duration

TZ = time for counting pulse

T^* = depends on pressure and length of tubing
(values must be calculated)

Type PZV-S-E-AUT



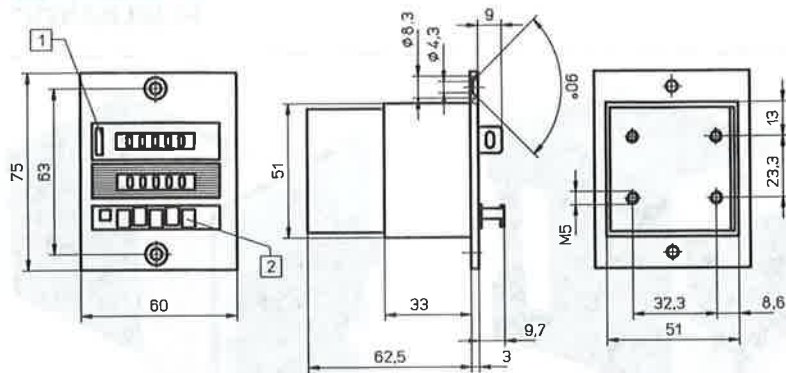
3 pulses/s
Pulse to pause ratio 1/10

20 pulses/s
with pulse interruption

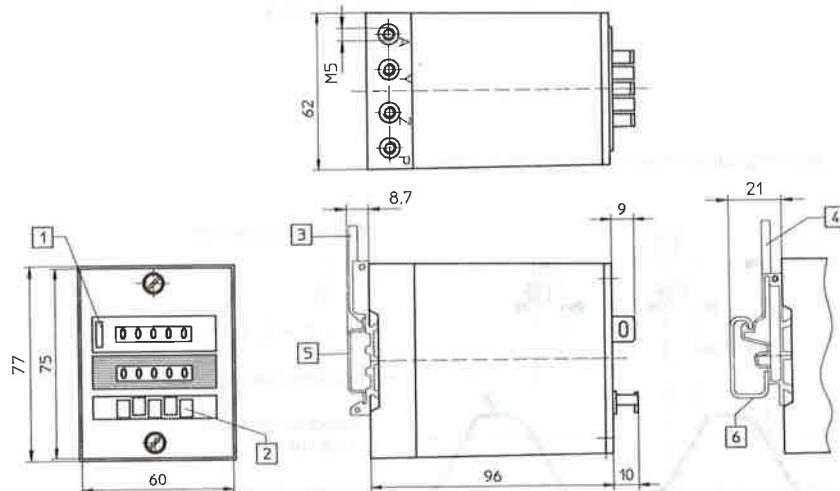
Output pulse

Order code	Part No./Type	8605 PZV-S-E	19 128 PZV-S-E-SGH	13987 PZV-S-E-AUT
Medium		Compressed air, filtered, unlubricated		
Design		Mechanical counter with pneumatic drive		
Mounting		Panel mounting	on mounting plates	
Display		5-digit, height of figures 4.5 mm		
Reset		Pushbutton or pneumatic signal		automatic
Connection		M 5		
Pressure range		2 to 8 bar		
Min. pulse duration	count	10 ms		100 to 240 ms
	reset	180 ms		
Min. pause duration	count	12 ms		
	reset	50 ms		
Temperature range		– 5 to + 60 °C		
Material		Housing: plastic		
Weights		0.146 kg		0.181 kg

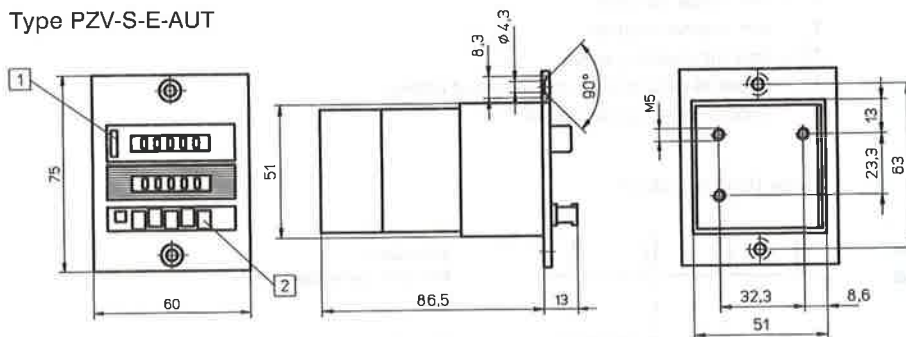
Type PZV-S-E



Type PZV-S-E-SGH



Type PZV-S-E-AUT



P = supply port
A = output signal
Z = counting signal
Y = reset signal

- | | |
|---|-----------------------------------|
| 1 | Reset button |
| 2 | Preselect buttons |
| 3 | Mounting plate type MPL-MUS-/PZ-H |
| 4 | Mounting plate type MPL-MUS-/PZ-G |
| 5 | H rail to DIN 50 022 |
| 6 | G rail to DIN 50 035 |

Type PZV-S-E, PZV-S-E-SGH

The pre-selected number can be set again by means of the reset button or by means of a pneumatic signal at the reset port.

Please note:

The output signal at A must not be used for resetting the counter. No counting pulses should be present during the resetting procedure.

Type PZV-S-E-AUT

When the preset number is reached, the counter emits a pneumatic signal and automatically resets itself.

The output signal is present for 100 to 240 ms (depending on the operating pressure and length of tubing).

Please note:

Counting signals arriving during the reset time are not processed.