

Pneumatic preset counter

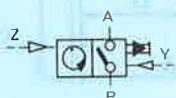
Subtracting counting mode

Assembly type

Type PZV-E-C

for mounting on G or H rail

Type PZV-E-SGH



Protective cover see sheet 3.285

The counter counts pneumatic signals backwards from a pre-set number. If zero is reached, the counter emits a pneumatic output signal. This output signal continues to be emitted until the counter is reset. The counter is pre-set by pressing the reset key and simultaneously keying in the pre-set value. The pre-set number selected is retained when the counter is reset.

Accessories:

Protecting cover against penetration of dirt and water splashes on front face.

Order reference:

Protective cover with knob
14663 PZ-SK-2

Protective cover with lock
13966 PZ-SS-2

The following mounting plates are required for mounting a counter of type PZV-S-E-SGH on G or H rail.

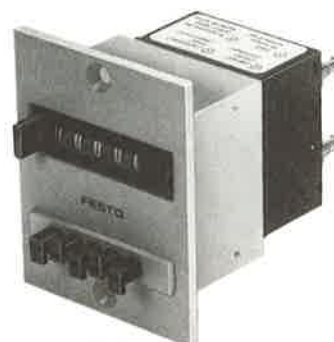
Order code:

Mounting plate for G rail to
DIN EN 50 035:
19 134 MPL-MUS/PZ-G

Mounting plate for H rail to
DIN EN 50 022:
19 135 MPL-MUS/PZ-H



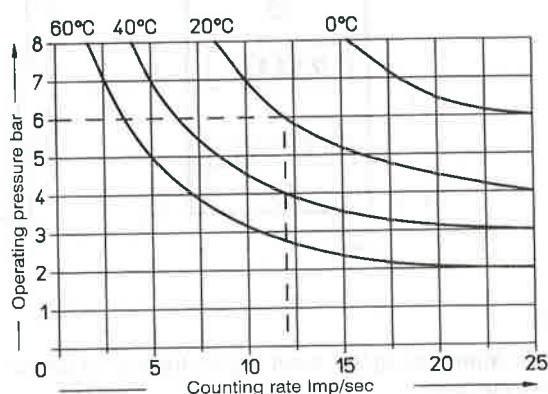
PZV-E-SGH



PZV-E-C

The counter can be overloaded up to 12 bar for short periods.
For resetting, please see over page.

Counting rate

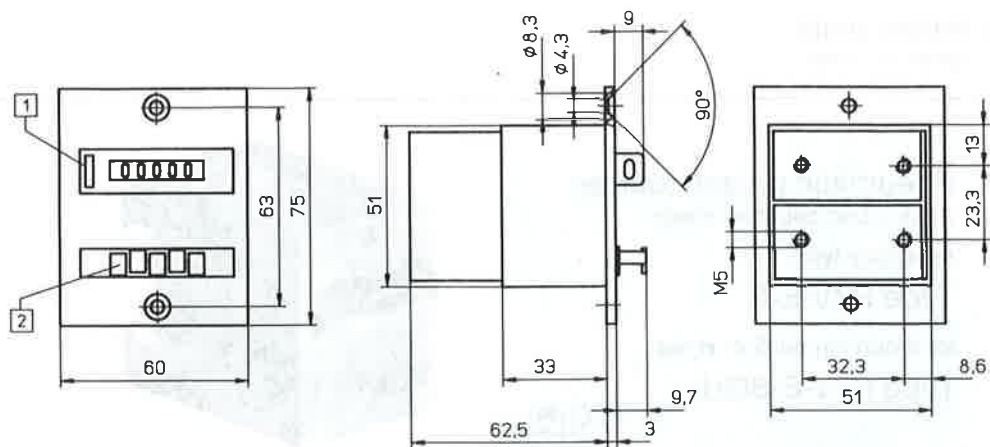


Intermittent service: the counter operates with interruptions. The counting rate is constant, right down to zero contact (high rate possible). Resetting then takes place.

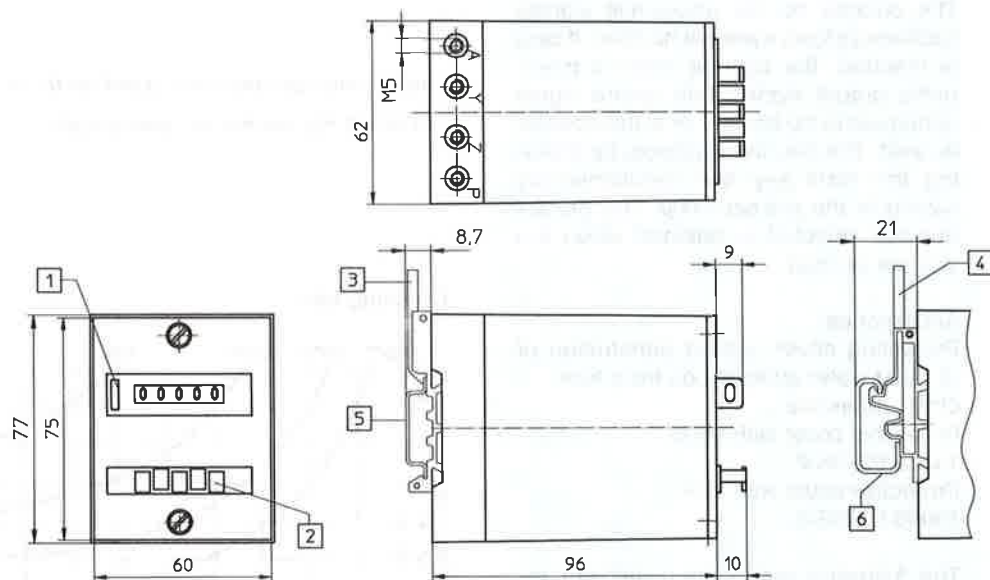
Continuous running: the counter operates without interruption at constant rate. The interval between 2 count signals is longer than the time required for resetting.

Order code	Part No./Type	15608 PZV-E-C	19129 PZV-E-SGH
Medium		Filtered compressed air without oil	
Construction		Mechanical counter with pneumatic drive	
Type of fastening		Front panel assembly	on mounting plates
Display		5-digit, digit size 4.5 mm	
Resetting		Manual key or pneumatic signal	
Connection		M 5	
Pressure range		2 to 8 bar	
Minimum response pressure		0.6 ± 0.2 bar	
Drop-out pressure	Drive	0.2 ± 0.1 bar	
	Resetting	0.15 ± 0.1 bar	
Min. pulse duration	Drive	10 ms	
	Resetting	180 ms	
Min. interval duration	Drive	15 ms	
	Resetting	50 ms	
Resetting time		35 ms	
Temperature range		- 10 to + 60 °C	
Materials		Housing: plastic; seals: chloroprene	
Weight		0.150 kg	

Type PZV-E-C



Type PZV-E-SHG



Type PZV-E-C, PZV-E-SHG

The pre-set number is put in again using the reset key or through a pneumatic signal on the reset connection.

NB: The output signal at A may not be used to reset the counter. No counting pulses may stand in line or arrive during the reset process.

- Z = Counting signal
- Y = Reset signal
- P = Supply port
- A = Output signal
- 1 Reset button
- 2 Preselect buttons
- 3 Mounting plate type MPL-MUS-/PZ-H
- 4 Mounting plate type MPL-MUS-/PZ-G
- 5 H rail to DIN 50 022
- 6 G rail to DIN 50 035