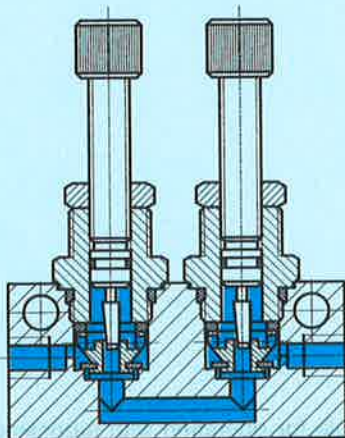
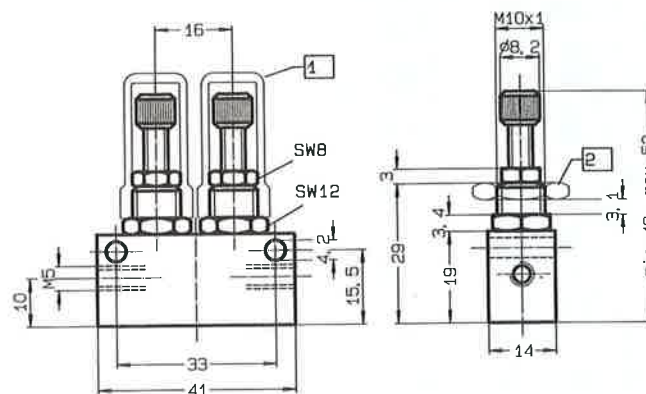


Accessories:
 Tamper-proof cap Type GRK-M5
 Hexagon nut Type GRM-M5
 for front-panel mounting

In each valve, an adjustable throttle screw allows stepless adjustment of the air flow in the direction of the arrow. In the other direction, the air flows via a non-return valve with full cross-sectional flow.



Number of turns of the adjustment screw	Nominal flow rate (l/min)
7	0
8	1
10	3
12	5
14	6
16	10
18	20
20	40
21	58



→ Flow control direction
① Tamper-proof cap Type GRK } Order separately
② Hexagon nut Type GRM }

Order code	Part No./Type	25089 GR-M5 × 2	6436 GRK-M5	6444 GRM-M5
Medium		Compressed air, filtered (lubricated or unlubricated)		
Design		Flow control valve with one-way adjustment		
Mounting		2 through-holes in housing or front-panel mounting		
Connection		M5		
Nominal size	in flow control direction	2 mm		
	free flow	2 mm		
Standard nominal	in flow control direction	60 l/min		
flow rate	free flow	45 l/min		
Pressure range		0.5 to 10 bar		
Temperature range		− 10 to +60 °C		
Materials		Housing: anodized aluminium; seals: perbunan		
Weight		0.045 kg	0.001 kg	0.004 kg