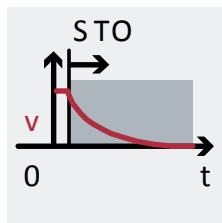


Safety Sub-Functions STO, Cat. 4, up to PL e Servo Drive CMMT-AS-...-S1



Application Note
CMMT-AS-...-S1,
STO Category 4, up
to PL e

Title Application Note CMMT-AS-...-S1, STO Category 4, up to PL e
Version 1.0
Document number (TSHQ) 100228
Original German
Author Festo
Last date of saving 15/02/2019

Legal Notice

In the following, the “Festo AG & Co.KG” is designated as “Festo”.

This Example circuit is not binding. This example circuit outlines a possible solution for a sample application and makes no claim of completeness, especially with regard to configuration and equipment, as well as any eventualities for your actual application. The Example circuit is not a customised solution, it merely offers assistance with typical task assignments.

The values stated in the Example circuit are partly assumptions and assessments which do not replace a detailed examination based on EN ISO 13849 part 1 and 2.

The actual characteristic values that can be obtained (especially PL, PFH_D, category, DC, MTT_D, CCF) depend on the components used, as well as their conditions of use in the actual application.

The example circuit does not relieve you of the obligation to carry out a risk assessment and a validation of the specific application and to ensure the adherence to all specifications, especially the EC Machinery Directive 2006/42/EG. As the user, you are responsible for your specific application and for the correct operation of the described products.

Festo does not accept any liability for damages arising from the use of any incorrect or incomplete information contained in this documentation or any information missing therefrom. This equally applies to defects resulting from improper handling of devices and modules. In addition, all liability, with the exception of intent or gross negligence on the part of Festo, for damages arising due to non-adherence of the specifications of the EC Machinery Directive 2006/42/EG is also rejected.

The information in this document is in no way intended as a substitute for the operating instructions of the respective manufacturers or the design and testing of the application by the user. The operating instructions for products from Festo can be found at www.festo.com. Users of this document must themselves verify that all the functions described herein also work correctly in the application. Even after examining this document and using the specifications contained herein, users are nevertheless solely responsible for their own application.

Otherwise, all stipulations concerning liability included in the terms and conditions of delivery, payment and use of software from Festo, which can be found at www.festo.com and can be supplied on request, apply.

This document is only suitable for persons with sufficient expertise for machine safety based on EN ISO 12100 and EN ISO 13849. In addition, the following qualifications are required in the project team:

- Specialist in electrical engineering
- Specialist for the programming of control systems and safety switching devices

Copyright Notice

This documentation is the intellectual property of Festo, which also holds the exclusive copyright. Any modification of the content, duplication or reprinting of this documentation, as well as distribution to third parties, is only permissible with the express consent of Festo.

Festo reserves the right to make modifications to this document in whole or in part. All brand and product names are trademarks or registered trademarks of their respective owners.

© (Festo AG & Co.KG, D - 73734 Esslingen, 2019)

Internet: www.festo.com

E-Mail: service_international@festo.com

Table of Content

- 1 Example Circuits 4**
- 1.1 STO with servo drive CMMT-AS-...-S1 5
 - 1.1.1 Circuit Diagram 5
 - 1.1.2 Components..... 5
 - 1.1.3 Description..... 6
 - 1.1.4 Safety Considerations 6
- 2 Literature 7**

1 Example Circuits

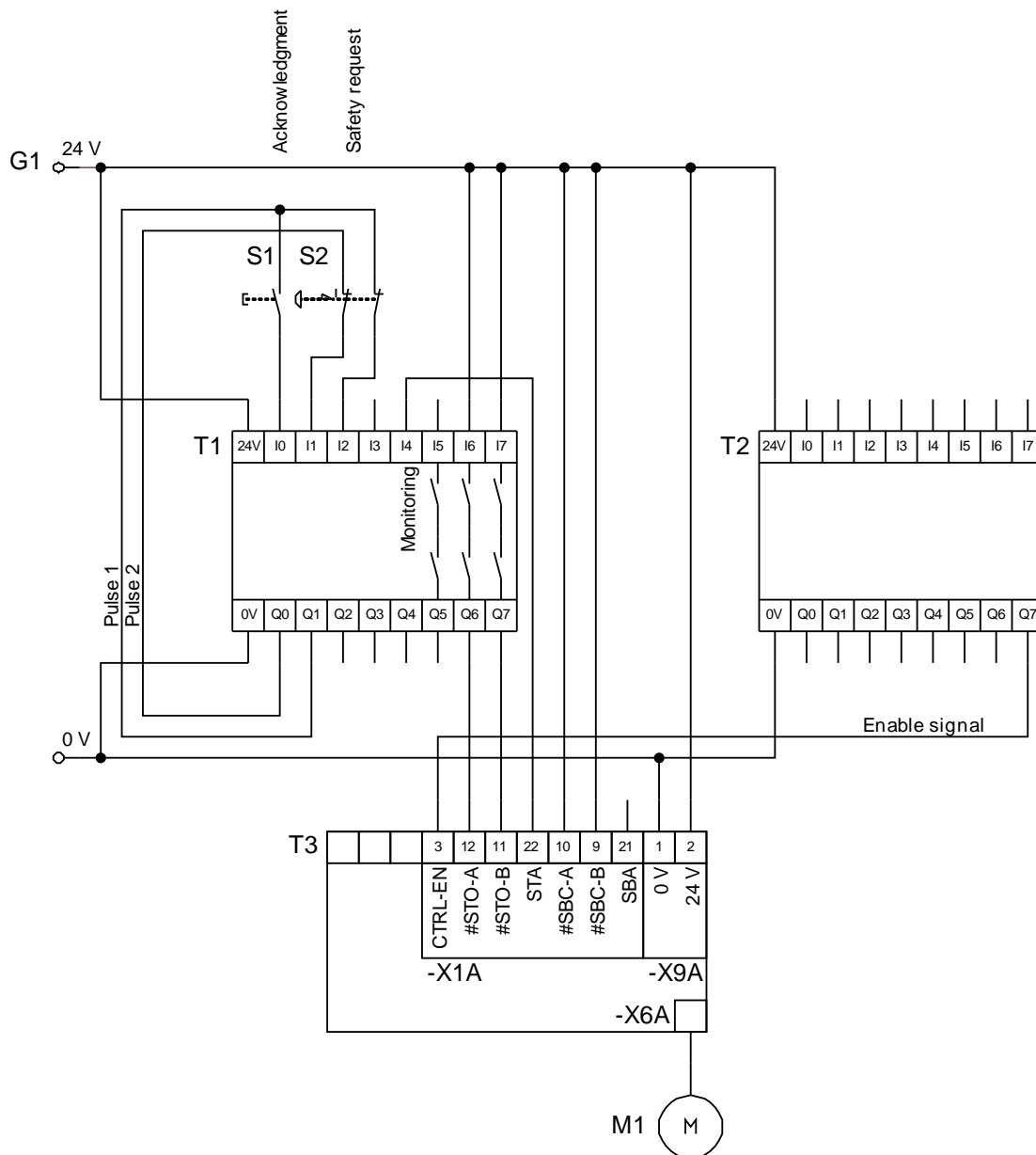
- The circuits specified in this document are principle circuits which cannot be complete due to their clarity and scope. Safety commanding device and safety switching device are not part of this document and are given for information only.
- The abbreviations used for the safety sub-functions refer to the definitions in EN 61800-5-2 [1] for electrical power drive systems:
 - STO: Safe Torque Off
- Category 4, up to PL e according EN ISO 13849-1 [2].
- To understand this application note, are following documents necessary:
 - Description “Servo drive CMMT-AS-C2/C4-3A-...”. This description is available on the Internet https://www.festo.com/net/en-gb_gb/SupportPortal/Downloads/466851/573769/CMMT-AS-C2_C4-3A_2018-10a_8095049g1.pdf
 - Description “Safety sub-function STO, SBC, SS1” for servo drive CMMT-AS-...-S1. This description is available on the Internet https://www.festo.com/net/en-gb_gb/SupportPortal/Downloads/466859/573777/CMMT-AS-_-S1_2018-10a_8096257g1.pdf
- The circuits and the procedure described are recommendations which do not exclude other possibilities.

1.1 STO with servo drive CMMT-AS-...-S1

STO according EN 61800-5-2 [1].

1.1.1 Circuit Diagram

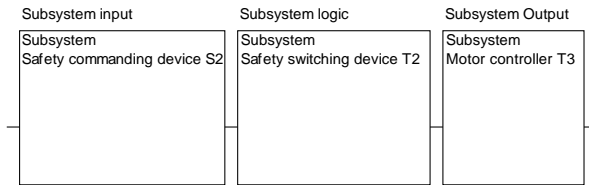
Only relevant contacts are shown!



1.1.2 Components

Component	Type (Part Number)	Description / Remarks	Qty.	Mssr.
M20	EMM...-AS	Servo motor	1	Festo
S1		Acknowledge push button	1	
S2		Safety commanding device, e.g. emergency stop switch	1	
T1		Safety switching device	1	
T2		Functional PLC	1	
T3	CMMT-AS-...-S1	Servo drive	1	Festo

1.1.3 Description

Application	Servo drive with servo motor without external forces, e.g. horizontal axis
Triggering event	Safety request (S2), e.g. by emergency stop switch, safety gate
Reaction (Safety sub-function)	<p>Safety sub-function safe torque off (STO), category 4, PL e</p> 
Safe state	<p>The servomotor (M20) is not supplied with energy that can generate a force and a movement. It is presumed that this state of the servomotor (M20) is the safe state.</p> <p>Notes:</p> <ul style="list-style-type: none"> Stopping the servo motor (M20) is not considered, additional measures may be required, e.g. self-blocking axis mechanism. If external forces act on the servomotor, e.g. in the case of vertical axes, the request for the safety sub-function STO can result in a dangerous movement. Then additional measures may be necessary, e.g. a holding brake.
Function of the circuit	<p>Due to the safety request (S2)::</p> <ul style="list-style-type: none"> The input circuit of the safety switching device (T1) is interrupted. The outputs (Q6, Q7) of the safety switching device (T1) are then switched off. The inputs “Safe torque off, channel A and B (#STO-A, #STO-B)” of the servo drive (T3) are no longer controlled. This switch off the control of the output stage and requests the safety sub-function STO. <p>Notes:</p> <ul style="list-style-type: none"> The input “output stage enable (CTRL-EN)” of the servo drive (T3) can be functionally controlled to cause the servo drive to stop. If the safety sub-function STO is requested during a movement, the axis coasts down.
Manual reset function	<p>After resetting the safety request (S2), e.g. by mechanically unlocking the emergency stop switch or closing the safety gate, the start or restart can be made possible by actuating the acknowledgement button (S1).</p> <p>The safety switching device (T1) controls via the outputs (Q6, Q7) the servo drive (T3). This makes it possible to control the power output stage again and the STO safety sub-function is no longer active.</p>
Diagnosis	<p>The diagnostic output STA reports the status of the safety sub-function STO to the safety switching device (T1). Diagnosis is performed via the safety switching device (T1):</p> <ul style="list-style-type: none"> If the outputs (Q6, Q7) of the safety switching device (T1) are switched off, the safety sub-function STO is requested via the inputs (#STO-A, #STO-B) of the servo drive (T3). After the typical time for the servo drive, the output (STA) is switched on. This diagnostic feedback delay must be monitored for a minimum and maximum permissible time by the safety switching device (T1). If the outputs (Q6, Q7) of the safety switching device (T1) are switched on, the safety sub-function STO is disabled via the inputs (#STO-A, #STO-B) of the servo drive (T3). After the typical time for the servo drive, the output (STA) is switched off. This diagnostic feedback delay must be monitored for a minimum and maximum permissible time by the safety relay (T1). <p>If a fault is detected by the diagnosis, a suitable fault reaction must be carried out by the safety switching device (T1). It is common that the machine is brought into a safe state and further operation is prevented.</p>

1.1.4 Safety Considerations

Input	Safety considerations must be carried out in accordance with the selected safety commanding device (S2).
Logic	Safety considerations must be carried out in accordance with the selected safety switching device (T1).

Output	<p>The intended use of the servo drive (T3) includes the safety sub-function STO with category 4, up to PL e. The PFH_D value required to determine the reliability of the overall circuit must be available.</p> <p>Note:</p> <ul style="list-style-type: none"> • For the circuit shown in this document, the safety indices "with high test pulses and with STA evaluation" can be selected.
--------	--

2 Literature

- [1] DIN EN 61800-5-2:2017-11 - Adjustable speed electrical power drive systems - Part 5-2: Safety requirements - Functional (IEC 61800-5-2:2016); German version EN 61800-5-2:2017
- [2] DIN EN ISO 13849-1:2016-06 - Safety of machinery - Safety-related parts of control systems - Part 1: General principles for design (ISO 13849-1:2015); German version EN ISO 13849-1:2015
- [3] DIN EN 60204-1:2007-06 - Safety of machinery - Electrical equipment of machines - Part 1: General requirements (IEC 60204-1:2005, modified); German version EN 60204-1:2006