

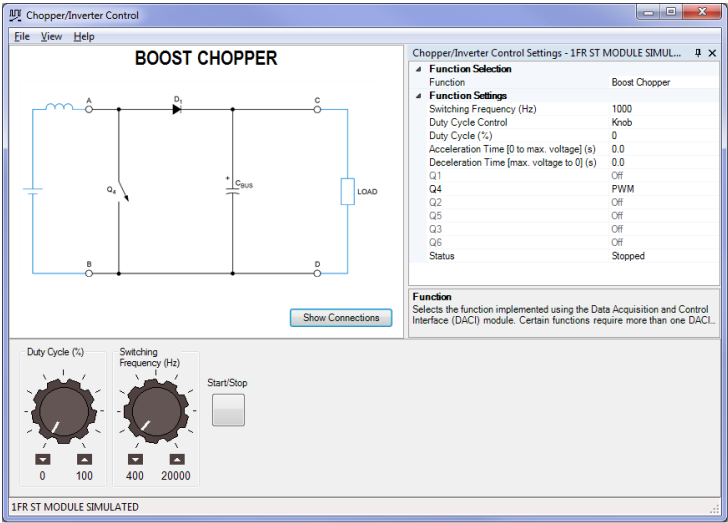
Chopper/Inverter Control Function Set

581453 (9069-20)

FESTO

LabVolt Series

Datasheet



* The product images shown in this document are for illustration purposes; actual products may vary. Please refer to the Specifications section of each product/item for all details. Festo Didactic reserves the right to change product images and specifications at any time without notice.

Festo Didactic
en
08/2025

Table of Contents

General Description	3
Specifications	3

General Description

The Chopper/Inverter Control Function Set enables the following choppers and inverters to be implemented using the Data Acquisition and Control Interface, the IGBT Chopper/Inverter and the Insulated DC-to-DC Converter:

- Buck Chopper (high-side switching)
- Buck Chopper (low-side switching)
- Buck/Boost Chopper
- Boost Chopper
- Four-Quadrant Chopper
- Buck Chopper with Feedback
- Boost Chopper with Feedback
- Single-Phase, 180° Modulation Inverter
- Single-Phase PWM Inverter
- Three-Phase, 180° Modulation Inverter
- Three-Phase PWM Inverter
- Three-Phase Inverter (constant V/f ratio)
- Insulated DC-to-DC Converter
- Four-Quadrant DC Motor Drive without Current Control
- Four-Quadrant DC Motor Drive

Specifications

Parameter	Value
Control Functions	
Control Functions	Buck Chopper (high-side switching)
	Buck Chopper (low-side switching)
	Buck/Boost Chopper
	Boost Chopper
	Four-Quadrant Chopper
	Buck Chopper with Feedback
	Boost Chopper with Feedback
	Single-Phase, 180° Modulation Inverter
	Single-Phase PWM Inverter
	Three-Phase, 180° Modulation Inverter
	Three-Phase PWM Inverter
	Three-Phase PWM Inverter (constant V/f ratio)
	Insulated DC-to-DC Converter
	Four-Quadrant DC Motor Drive without Current Control
	Four-Quadrant DC Motor Drive
Buck Chopper (high-side switching), Buck Chopper (low-side switching), Buck/Boost Chopper, Boost Chopper, Four-Quadrant Chopper	
Switching Frequency	400 Hz to 20 kHz
Duty Cycle Control	Knob or analog input on the DACI
Duty Cycle	0-100%
Acceleration Time (0 to Max. Voltage)	0-100 s
Deceleration Time (Max. Voltage to 0)	0-100 s
IGBTs Q1 to Q6	PWM, on, off (certain IGBTs are unavailable depending on the selected chopper control function)

Parameter	Value
Buck Chopper with Feedback, Boost Chopper with Feedback	
Switching Frequency	2-20 kHz
Command Input	Knob or analog input on the DACI
Command	0-100%
Feedback Input	Voltage, current, speed, power, or low-power analog signal
Feedback Filter Cutoff Frequency	100-4900 Hz
Feedback Range (100% Value =)	10-400 V
Acceleration Time (0 to 100%)	0-100 s
Deceleration Time (100% to 0)	0-100 s
Single-Phase, 180° Modulation Inverter	
DC Bus	Unipolar or bipolar
Frequency	0-120 Hz
IGBTs Q1 to Q6	180° Modulation, on, or off (certain IGBTs are unavailable)
Single-Phase PWM Inverter	
DC Bus	Unipolar or bipolar
Switching Frequency	400 Hz to 20 kHz
Frequency	0-120 Hz
Peak Voltage	0-100% of dc bus
IGBTs Q1 to Q6	PWM, on, or off (certain IGBTs are unavailable)
Three-Phase, 180° Modulation Inverter	
Phase Sequence	Forward (1-2-3), reverse (1-3-2), or forward/reverse
Frequency	0-120 Hz
IGBTs Q1 to Q6	180° Modulation, on, or off
Three-Phase PWM Inverter	
Switching Frequency	400 Hz to 20 kHz
Phase Sequence	Forward (1-2-3), reverse (1-3-2), or forward/reverse
Frequency	0-120 Hz
Peak Voltage	0-117% of dc bus/2
Modulation Type	Sinusoidal pulse-width modulation or space vector
IGBTs Q1 to Q6	PWM, on, or off
Three-Phase PWM Inverter (Constant V/f Ratio)	
Switching Frequency	400 Hz to 20 kHz
Phase Sequence	Forward (1-2-3), reverse (1-3-2), or forward/reverse
Frequency	0-120°
Knee Peak Voltage	0-117% of dc bus voltage/2
Knee Frequency	1-120 Hz
Modulation Type	Sinusoidal pulse-width modulation or space vector
Acceleration Time (0 to Knee)	0-100 s
Deceleration Time (Knee to 0)	0-100 s
Insulated DC-to-DC Converter	
Duty Cycle	0-45%
Four-Quadrant DC Motor Drive with and without Current Control	
Switching Frequency	2-20 kHz
Speed Command Input	Knob or analog input on the DACI
Speed Command	-5000 r/min to 5000 r/min
Pulley Ratio	24:12 or 24:24
Acceleration Time (0 to Max. Speed)	0-100 s
Deceleration Time (Max. Speed to 0)	0-100 s
Current Feedback Range	4 A or 40 A (only available in current control)
Current Feedback Filter Cutoff Frequency	100-4900 Hz (only available in current control)
Current Command Limit	0-40 A (only available in current control)

Reflecting the commitment of Festo Didactic to high quality standards in product, design, development, production, installation, and service, our manufacturing and distribution facility has received the ISO 9001 certification.

Festo Didactic reserves the right to make product improvements at any time and without notice and is not responsible for typographical errors. Festo Didactic recognizes all product names used herein as trademarks or registered trademarks of their respective holders. © Festo Didactic Inc. 2025. All rights reserved.

Festo Didactic SE

Rechbergstrasse 3
73770 Denkendorf
Germany

P. +49(0)711/3467-0
F. +49(0)711/347-54-88500

Festo Didactic Inc.

607 Industrial Way West
Eatontown, NJ 07724
United States

P. +1-732-938-2000
F. +1-732-774-8573

Festo Didactic Ltée/Ltd

675 rue du Carbone
Québec QC G2N 2K7
Canada

P. +1-418-849-1000
F. +1-418-849-1666

www.labvolt.com

www.festo-didactic.com