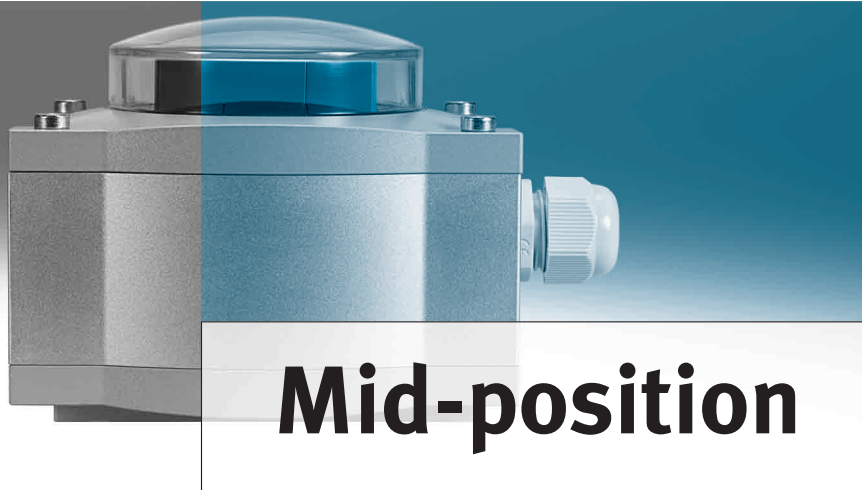


# Binary sensor boxes SRBP for semi-rotary actuators

**FESTO**



## **Optional mid-position and integrated control of a solenoid valve!**

The binary sensor boxes SRBP don't just turn mechanical open and closed positions of an actuator or process valve into electrical output signals – they also enable you to detect a mid-position.

## **Simple installation and commissioning**

Can be directly mounted on the quarter turn actuator DFPB without accessories. Mounting on other semi-rotary actuators using an adapter for the Namur interface (VDI/VDE 3845) is quick and easy. The flexible end positions in the range of 0 - 270° are set automatically during commissioning, thanks to the application-oriented design.

## **Reliable**

The current position of a semi-rotary actuator is always clearly visible, even from a distance, thanks to the coloured position indicator. The internal LEDs also

display the current position.

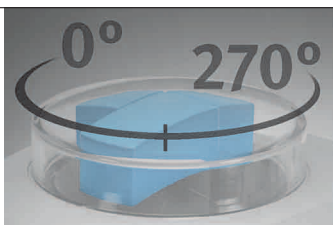
Suitable for 3-way valves, as the position indicator can be altered to be I-, L- or T-shaped.

## **Sturdy and explosion-proof**

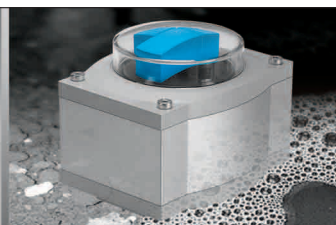
The sturdy, corrosion-resistant and waterproof metal housing offers increased safety – even in harsh, corrosive and potentially explosive environments.

## **Complete**

At Festo, the concept and the solution for automation come from a single source. The new sensor boxes SRBP make these complete solutions even more attractive.



Optional mid-position



Sturdy and safe



A perfect fit

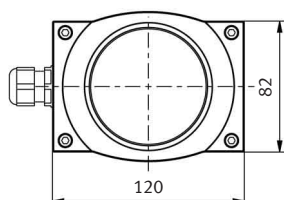
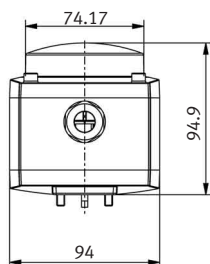
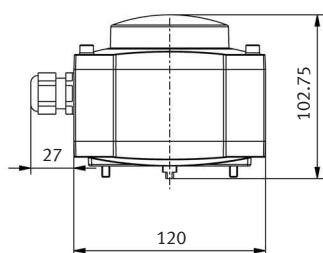
**910.10.PSI →**

Product Short Information

# Binary sensor boxes SRBP for semi-rotary actuators

Technical data		
Measuring principle		Magnetic reed
Measuring range		0 to 270°
Operating voltage range	N/O contact	8.2 ... 24 V AC/DC
	Changeover switch	15 ... 24 V AC/DC
Protection class		Protection to IP65
Corrosion resistance		CRC 3
UV resistance		Yes
Mechanical position indicator		In three colour combinations: - Blue/black - Yellow/black - Green/red
Ambient temperature		-20 to +80 °C
ATEX		Ex II 3 G/D
Hysteresis		3° ≤ x ≤ 6°
Cable connection		M20 x 1.5 for non-explosive and explosive areas
Also available with integrated resistance circuit for monitoring lines for breaks with input circuit for sensors constructed in accordance with EN 60947-5-6 (NAMUR).		
Self-compensating end positions		
Captive screws and type designation		

## Dimensions



## Accessories

- Mounting adapters for the semi-rotary drives per VDI/VDE 3845 (NAMUR):
  - Hole pattern 30 x 80 mm at shaft height 20 mm
  - Hole pattern 30 x 130 mm at shaft height 50 mm
  - Hole pattern 30 x 80/130 mm at shaft height 30 mm
- Metric cable connector:
  - M20 x 1.5 Polymer for non-explosive areas
  - M20 x 1.5 Polymer for explosive areas (3GD)
  - M20 x 1.5 metal for non-explosive areas
- Plug sockets and plug sockets with cable for solenoid valves.

## Ideal for system solutions:

### everything from a single source

Our sensor boxes SRBP are just one of the components you need for successful process automation.

At Festo, you can find the complete portfolio for process automation – from management level to control and sensor-actuator level and field level.

The perfect extension to all current semi-rotary actuators – especially DFPB.



## Festo AG & Co. KG

Ruiter Strasse 82  
73734 Esslingen  
www.festo.com  
Tel. +49 711 347-0  
Fax +49 711 347-21 44  
service\_international@festo.com