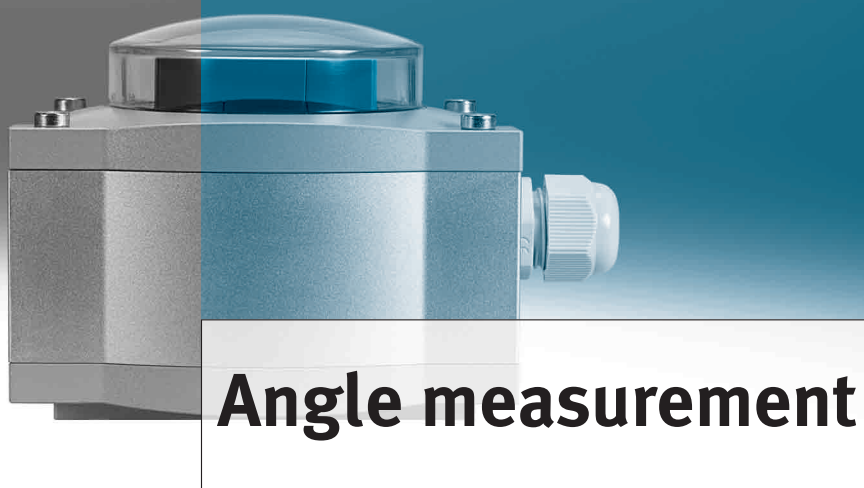


Analogue sensor boxes SRAP for semi-rotary actuators

FESTO



Analogue signals for more functions. The analogue position indicator gives a 4 – 20 mA output signal and is used for monitoring the position of semi-rotary actuators. The analogue signal output not only reports the valve position “open – closed”, but the entire swivel angle.

Simple mounting and commissioning

Thanks to the teach-in function, the zero point and the margin can be set in the range from 0 to 270°. It can be mounted directly on the semi-rotary actuator DFPB without the need for accessories. Mounting on other semi-rotary actuators using adapter bridges for the Namur interface (VDI/VDE 3845) is quick and easy.

Clear

The actual position of the semi-rotary actuator is made clearly visible by the coloured position indicator, even from a distance. In addition, it has an internal LED to display the operating status.

Intelligent

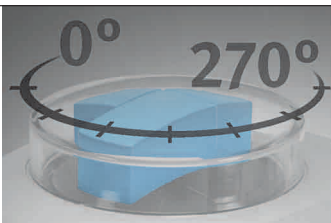
Innovative referencing to the actual swivel angle makes optimal use of the output margin.

Sturdy and explosion-proof

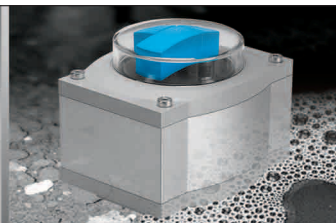
Increased safety because of its sturdy, corrosion-resistant and waterproof metal housing – even in rough, corrosive and explosive environments.

Complete

At Festo, the concept and the solution for automation come from a single source. The new sensor boxes SRAP make these complete solutions even more attractive.



Integrated angle measurement



Sturdy and safe



A perfect fit

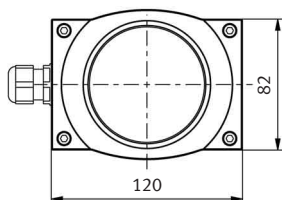
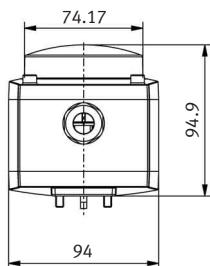
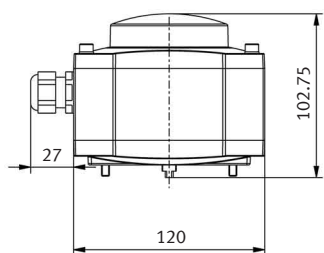
910.11.PSI →

Product Short Information

Analogue sensor boxes SRAP for semi-rotary actuators

Technical data	
Measuring principle	2D Hall
Measuring range	0 to 270°
Output signal	4 ... 20 mA
Operating voltage range	24 V DC
Short-circuit resistance, reverse polarity protection	Yes/yes
Protection class	Protection to IP65
Corrosion resistance	CRC 3
UV resistance	Yes
Mechanical position indicator	In three colour combinations: - blue/black - yellow/black - green/red
Ready status display	Yes, internal LED
Ambient temperature	-20 ... +80 °C
Explosion protection	Ex II 3 GD
Hysteresis	± 2°
Linearity	± 3°
Cable connection	M20x1.5 for non-explosive and explosive areas
Captive screws and rating plates	

Dimensions



Accessories

1. Mounting adapters for the semi-rotary drives as per VDI/VDE 3845 (NAMUR):
 - a. Hole pattern 30 x 80 mm at shaft height 20 mm
 - b. Hole pattern 30 x 130 mm at shaft height 50 mm
 - c. Hole pattern 30 x 80/130 mm at shaft height 30 mm
2. Metric cable connector:
 - a. M20x1.5 polymer for non-explosive area
 - b. M20x1.5 polymer for explosive area (3GD)
 - c. M20x1.5 metal for non-explosive area
3. Plug sockets and plug sockets with cable for solenoid valves.

Ideal for system solutions:

everything from a single source

Our sensor boxes are just one module for your successful process automation.

At Festo, you can find the complete portfolio for process automation - from management level to control level and sensor-actuator level to field level.

The perfect addition to all existing semi-rotary actuators – especially the DFPB.



Festo AG & Co. KG

Ruiter Strasse 82
73734 Esslingen
www.festo.com
Tel. +49 711 347-0
Fax +49 711 347-2144
service_international@festo.com