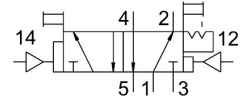


Pneumatic valve JDH-5-1/4

Part number: 10409

FESTO



[General operating condition](#)

Data sheet

| Feature | Value |
|---|--|
| Valve function | 5/2-way, bistable, dominant |
| Type of actuation | Pneumatic |
| Construction width | 30.5 mm |
| Standard nominal flow rate (standardised to DIN 1343) | 1100 l/min |
| pneumatic working port | G1/4 |
| Operating pressure | 0 MPa ... 0.8 MPa |
| Operating pressure | 0 bar ... 8 bar |
| Design | Poppet seat |
| Degree of protection | IP65 |
| Nominal size | 7 mm |
| Grid dimension | 32 mm |
| Exhaust-air function | With flow control option |
| Sealing principle | Soft |
| Mounting position | optional |
| Type of piloting | Direct |
| Pilot air supply | External |
| Flow direction | Non-reversible |
| Symbol | 00995764 |
| lap | Underlap |
| Pilot pressure | 0.23 MPa ... 1 MPa |
| Pilot pressure | 2.3 bar ... 10 bar |
| Max. switching frequency | 12 Hz |
| Switching time reversal | 12 ms |
| Operating medium | Compressed air to ISO 8573-1:2010 [7:4:4] |
| Note on operating and pilot medium | Lubricated operation possible (in which case lubricated operation will always be required) |
| Corrosion resistance class CRC | 1 - Low corrosion stress |
| LABS (PWIS) conformity | VDMA24364-B1/B2-L |
| Storage temperature | -20 °C ... 60 °C |
| Media temperature | -10 °C ... 60 °C |
| Ambient temperature | -10 °C ... 60 °C |
| Product weight | 330 g |
| Type of mounting | On manifold rail With through-hole |
| Pilot air port 12 | G1/8 |
| Pilot air port 14 | G1/8 |

| Feature | Value |
|------------------------------|--------------------|
| Pneumatic connection, port 1 | G1/4 |
| Pneumatic connection, port 2 | G1/4 |
| Pneumatic connection, port 3 | G1/4 |
| Pneumatic connection, port 4 | G1/4 |
| Pneumatic connection, port 5 | G1/4 |
| Note on materials | RoHS-compliant |
| Material seals | NBR TPE-U(PU) |
| Material housing | Die-cast aluminium |