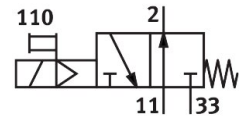


# Solenoid valve MOFH-3-3/4

Part number: 11969

FESTO



[PDF](#) General operating condition

## Data sheet

| Feature   | Value  |
|---|--|
| Valve function  | 3/2 open, monostable   |
| Type of actuation                                     | Electric   |
| Construction width                                    | 68 mm  |
| Standard nominal flow rate (standardised to DIN 1343) | 7500 l/min   |
| pneumatic working port                                | G3/4   |
| Operating voltage                                     | Via solenoid coil, must be ordered separately  |
| Operating pressure                                    | 0.2 MPa ... 0.8 MPa  |
| Operating pressure                                    | 2 bar ... 8 bar  |
| Design  | Poppet seat  |
| Type of reset   | Mechanical spring  |
| Approval  | c UL us - Recognized (OL)  |
| Degree of protection                                  | IP65   |
| Nominal size  | 19 mm  |
| Exhaust-air function                                  | With flow control option   |
| Sealing principle                                     | Soft   |
| Mounting position                                     | optional   |
| Manual override                                       | Detenting  |
| Type of piloting                                      | Pilot actuated   |
| Pilot air supply                                      | Internal   |
| Flow direction  | Non-reversible   |
| Symbol  | 00991017   |
| lap   | Underlap   |
| Switching time off                                    | 29 ms  |
| Switching time on                                     | 40 ms  |
| Max. positive test pulse with 0 signal                | 2200 µs  |
| Characteristic coil data                              | See solenoid coil, to be ordered separately  |
| Operating medium                                      | Compressed air to ISO 8573-1:2010 [7:4:4]  |
| Note on operating and pilot medium                    | Lubricated operation possible (in which case lubricated operation will always be required) |
| Corrosion resistance class CRC                        | 1 - Low corrosion stress   |
| LABS (PWIS) conformity                                | VDMA24364-B1/B2-L  |
| Storage temperature                                   | -20 °C ... 60 °C   |
| Media temperature                                     | -10 °C ... 60 °C   |
| Ambient temperature                                   | -5 °C ... 40 °C  |
| Product weight  | 1260 g   |
| Electrical connection                                 | Via F coil, to be ordered separately   |

| <b>Feature</b>                | <b>Value</b>                          |
|-------------------------------|---------------------------------------|
| Type of mounting              | On manifold rail<br>With through-hole |
| Pilot exhaust port 82         | M5                                    |
| Pneumatic connection, port 1  | G3/4                                  |
| Pneumatic connection, port 11 | G3/4                                  |
| Pneumatic connection, port 2  | G3/4                                  |
| Pneumatic connection, port 3  | G3/4                                  |
| Pneumatic port 33             | G3/4                                  |
| Note on materials             | RoHS-compliant                        |
| Material seals                | NBR                                   |
| Material housing              | Die-cast aluminium                    |